

Annual report

# John Hancock ESG Large Cap Core Fund

U.S. equity

October 31, 2022

# A *message* to shareholders



Dear shareholder,

The U.S. stock market suffered sizable losses and high volatility during the 12 months ended October 31, 2022. Persistently high inflation prompted the U.S. Federal Reserve (Fed) to tighten monetary policy aggressively, leading to a sharp rise in bond yields. Russia's invasion of Ukraine, which exacerbated stress in global supply chains, also weighed heavily on sentiment. The market rallied in July and October when encouraging data—including easing consumer demand—spurred hope that the Fed would soon be able to dial back its interest-rate hikes.

While nearly all market segments lost ground in the sell-off, mega-cap U.S. technology-related stocks were hit particularly hard. On the other hand, energy stocks held up reasonably well in the downturn thanks to the rally in crude oil prices.

In these uncertain times, your financial professional can assist with positioning your portfolio so that it's sufficiently diversified to help meet your long-term objectives and to withstand the inevitable bouts of market volatility along the way.

On behalf of everyone at John Hancock Investment Management, I'd like to take this opportunity to welcome new shareholders and thank existing shareholders for the continued trust you've placed in us.

Sincerely,

A handwritten signature in black ink that reads "Andrew Arnott". The signature is written in a cursive, slightly stylized font.

**Andrew G. Arnott**

Global Head of Retail,  
Manulife Investment Management

President and CEO,  
John Hancock Investment Management  
Head of Wealth and Asset Management,  
United States and Europe

This commentary reflects the CEO's views as of this report's period end and are subject to change at any time. Diversification does not guarantee investment returns and does not eliminate risk of loss. All investments entail risks, including the possible loss of principal. For more up-to-date information, you can visit our website at [jihinvestments.com](http://jihinvestments.com).

# John Hancock ESG Large Cap Core Fund

## Table of contents

- 2** Your fund at a glance
- 4** Management’s discussion of fund performance
- 6** A look at performance
- 8** Your expenses
- 10** Fund’s investments
- 14** Financial statements
- 17** Financial highlights
- 21** Notes to financial statements
- 29** Report of independent registered public accounting firm
- 30** Tax information
- 31** Shareholder meeting
- 32** Evaluation of advisory and subadvisory agreements by the Board of Trustees
- 39** Trustees and Officers
- 43** More information

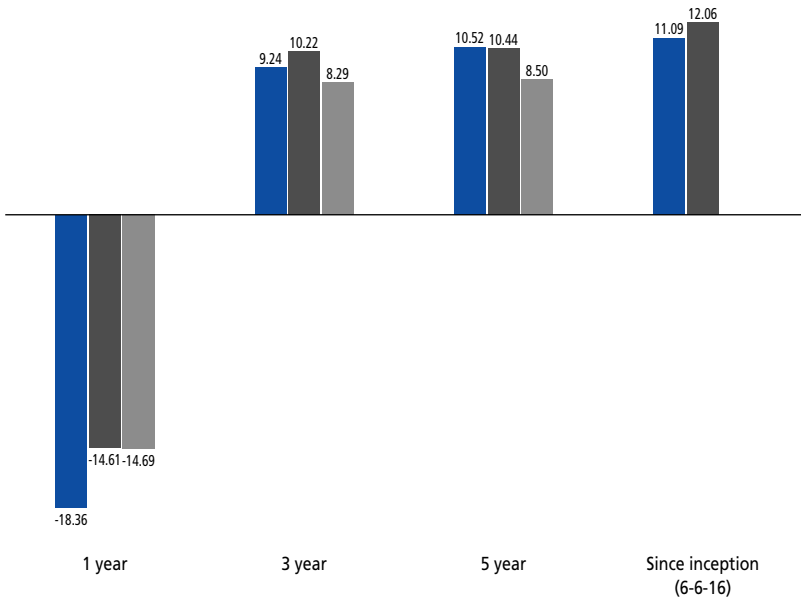
# Your fund at a glance

## INVESTMENT OBJECTIVE

The fund seeks long-term capital appreciation.

## AVERAGE ANNUAL TOTAL RETURNS AS OF 10/31/2022 (%)

- Class A shares (without sales charge)
- S&P 500 Index
- Morningstar large blend fund category average



The S&P 500 Index tracks the performance of 500 of the largest publicly traded companies in the United States.

It is not possible to invest directly in an index. Index figures do not reflect expenses or sales charges, which would result in lower returns.

The fund's Morningstar category average is a group of funds with similar investment objectives and strategies and is the equal-weighted return of all funds per category. Morningstar places funds in certain categories based on their historical portfolio holdings. Figures from Morningstar, Inc. include reinvested distributions and do not take into account sales charges. Actual load-adjusted performance is lower. Since-inception returns for the Morningstar fund category average are not available.

**The past performance shown here reflects reinvested distributions and the beneficial effect of any expense reductions, and does not guarantee future results. Performance of the other share classes will vary based on the difference in the fees and expenses of those classes. Shares will fluctuate in value and, when redeemed, may be worth more or less than their original cost. Current month-end performance may be lower or higher than the performance cited, and can be found at [jhinvestments.com](http://jhinvestments.com) or by calling 800-225-5291. For further information on the fund's objectives, risks, and strategy, see the fund's prospectus.**

## PERFORMANCE HIGHLIGHTS OVER THE LAST TWELVE MONTHS

### Market volatility dominated the period

U.S. stocks sank as inflation, geopolitical tensions, and recession fears caused investor concern.

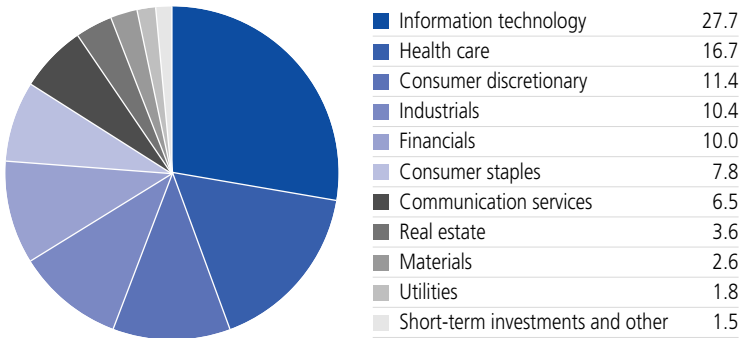
### The fund underperformed its benchmark, the S&P 500 Index

The fund lagged largely due to a lack of exposure to the strong-performing energy sector, which failed to meet its ESG criteria.

### Security selection in certain sectors was a positive

Strong security selection in consumer discretionary and an underweight and security selection in the lagging communication services sector helped the fund's performance.

## SECTOR COMPOSITION AS OF 10/31/2022 (% of net assets)



### Notes about risk

The fund is subject to various risks as described in the fund's prospectus. Political tensions and armed conflicts, including the Russian invasion of Ukraine, and any resulting economic sanctions on entities and/or individuals of a particular country could lead such a country into an economic recession. The COVID-19 disease has resulted in significant disruptions to global business activity. A widespread health crisis such as a global pandemic could cause substantial market volatility, exchange-trading suspensions, and closures, which may lead to less liquidity in certain instruments, industries, sectors, or the markets, generally, and may ultimately affect fund performance. For more information, please refer to the "Principal risks" section of the prospectus.

# Management's discussion of fund performance

## How did the stock market perform during the 12 months ended October 31, 2022?

Equities fell as inflation accelerated through most of the period, fueling recessionary fears and leading the U.S. Federal Reserve (Fed) to initiate a course of interest-rate increases starting in March 2022. Geopolitical tensions—particularly the Russian invasion of Ukraine, the energy crisis in Europe, and China's lockdowns—added to uncertainty, raising the risk of a global recession. These headwinds outweighed largely healthy corporate earnings reports and the hope that the Fed might slow its interest-rate hikes.

## How did the fund perform?

The fund trailed its benchmark, mostly due to avoidance of the energy sector, which benefited from sharply higher energy prices and was the market's best-performing category for the period. Entering this period, we had concluded that stocks in this group were falling short of our environmental standards and therefore didn't warrant a place in the fund's portfolio. Instead, we invested in several stocks we believed could benefit from the transition to a lower-carbon economy. Other performance challenges for the fund this period included security selection in information technology and financials. In contrast, the fund's relative underweight and security selection in communication services boosted results, as did stock picking in consumer discretionary.

### TOP 10 HOLDINGS AS OF 10/31/2022 (% of net assets)

Apple, Inc.	7.5
Microsoft Corp.	5.7
Alphabet, Inc., Class A	4.2
Elevance Health, Inc.	3.3
Target Corp.	2.5
Mastercard, Inc., Class A	2.5
Costco Wholesale Corp.	2.5
Merck & Company, Inc.	2.5
The TJX Companies, Inc.	2.0
UnitedHealth Group, Inc.	2.0
<b>TOTAL</b>	<b>34.7</b>

### COUNTRY COMPOSITION AS OF 10/31/2022 (% of net assets)

United States	87.8
Ireland	4.3
United Kingdom	3.9
Netherlands	1.7
Denmark	1.2
Canada	1.1
<b>TOTAL</b>	<b>100.0</b>

Cash and cash equivalents are not included.

SVB Financial Group was the fund's largest detractor. As market conditions weakened, the company's investment banking business struggled, weighing on the stock. Further detracting was Adobe, Inc., a provider of online publishing solutions. Like many growth stocks this period, Adobe fell as interest rates rose. Also, in September, the company reported weaker-than-expected quarterly results.

The fund's biggest relative contributor was Elevance Health, Inc. (formerly Anthem). Shares of this healthcare insurer rose as investors, facing a shaky market, appeared to favor stocks of relatively stable, less-volatile businesses. Another contributor was an out-of-benchmark investment in LPL Financial Holdings, Inc. This financial services firm and provider of technology brokerage and investment advisory services has benefited from increased adoption of its platform, which in turn has led to strong earnings growth for the company. As the period progressed, we trimmed the fund's exposure to LPL to manage risk.

### **From an environmental, social, and governance (ESG) perspective, what trends were you monitoring?**

One of our primary investment focuses this year has been the environment. Amid the Russian invasion of Ukraine, we believe uncertainty about energy supplies and the need for individual countries to secure their energy futures has grown. Given the changing climate, we believe it's more important than ever to invest in companies positioned to potentially benefit from renewable energy and able to help bring about a lower-carbon future.

### **MANAGED BY**

---

**Cheryl I. Smith, Ph.D., CFA**

**Elizabeth R. Levy, CFA**

**Mitali Prasad, CFA**



The views expressed in this report are exclusively those of the portfolio management team at Trillium Asset Management, LLC, and are subject to change. They are not meant as investment advice. Please note that the holdings discussed in this report may not have been held by the fund for the entire period. Portfolio composition is subject to review in accordance with the fund's investment strategy and may vary in the future. Current and future portfolio holdings are subject to risk.

# A look at performance

## TOTAL RETURNS FOR THE PERIOD ENDED OCTOBER 31, 2022

	Average annual total returns (%) with maximum sales charge			Cumulative total returns (%) with maximum sales charge	
	1-year	5-year	Since inception (6-6-16)	5-year	Since inception (6-6-16)
Class A	-22.46	9.39	10.20	56.64	86.26
Class C	-19.75	9.71	10.27	58.92	87.02
Class I <sup>†</sup>	-18.13	10.79	11.37	66.93	99.38
Class R6 <sup>†</sup>	-18.07	10.91	11.49	67.81	100.74
Index <sup>†</sup>	-14.61	10.44	12.06	64.31	107.37

Performance figures assume all distributions have been reinvested. Figures reflect maximum sales charges on Class A shares of 5%, and the applicable contingent deferred sales charge (CDSC) on Class C shares. Class C shares sold within one year of purchase are subject to a 1% CDSC. Sales charges are not applicable to Class I and Class R6 shares.

The expense ratios of the fund, both net (including any fee waivers and/or expense limitations) and gross (excluding any fee waivers and/or expense limitations), are set forth according to the most recent publicly available prospectuses for the fund and may differ from those disclosed in the Financial highlights tables in this report. Net expenses reflect contractual fee waivers and expense limitations in effect until February 28, 2023 and are subject to change. Had the contractual fee waivers and expense limitations not been in place, gross expenses would apply. The expense ratios are as follows:

	Class A	Class C	Class I	Class R6
Gross (%)	1.30	2.05	1.05	0.94
Net (%)	1.12	1.87	0.87	0.76

Please refer to the most recent prospectuses and annual or semiannual report for more information on expenses and any expense limitation arrangements for each class.

The returns reflect past results and should not be considered indicative of future performance. The return and principal value of an investment will fluctuate so that shares, when redeemed, may be worth more or less than their original cost. Due to market volatility and other factors, the fund's current performance may be higher or lower than the performance shown. For current to the most recent month-end performance data, please call 800-225-5291 or visit the fund's website at [jhinvestments.com](http://jhinvestments.com).

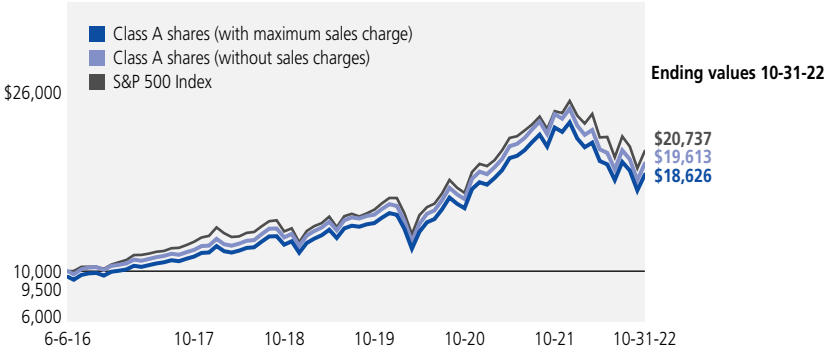
The performance table above and the chart on the next page do not reflect the deduction of taxes that a shareholder would pay on fund distributions or the redemption of fund shares. The fund's performance results reflect any applicable fee waivers or expense reductions, without which the expenses would increase and results would have been less favorable.

<sup>†</sup> Index is the S&P 500 Index.

See the following page for footnotes.



This chart and table show what happened to a hypothetical \$10,000 investment in John Hancock ESG Large Cap Core Fund for the share classes and periods indicated, assuming all distributions were reinvested. For comparison, we've shown the same investment in the S&P 500 Index.



	Start date	With maximum sales charge (\$)	Without sales charge (\$)	Index (\$)
Class C <sup>2</sup>	6-6-16	18,702	18,702	20,737
Class I <sup>1</sup>	6-6-16	19,938	19,938	20,737
Class R6 <sup>1</sup>	6-6-16	20,074	20,074	20,737

The S&P 500 Index tracks the performance of 500 of the largest publicly traded companies in the United States.

It is not possible to invest directly in an index. Index figures do not reflect expenses or sales charges, which would result in lower returns.

**Footnotes related to performance pages**

<sup>1</sup> For certain types of investors, as described in the fund's prospectus.

<sup>2</sup> The contingent deferred sales charge is not applicable.

# Your expenses

These examples are intended to help you understand your ongoing operating expenses of investing in the fund so you can compare these costs with the ongoing costs of investing in other mutual funds.

## Understanding fund expenses

As a shareholder of the fund, you incur two types of costs:

- **Transaction costs**, which include sales charges (loads) on purchases or redemptions (varies by share class), minimum account fee charge, etc.
- **Ongoing operating expenses**, including management fees, distribution and service fees (if applicable), and other fund expenses.

We are presenting only your ongoing operating expenses here.

## Actual expenses/actual returns

The first line of each share class in the table on the following page is intended to provide information about the fund's actual ongoing operating expenses, and is based on the fund's actual return. It assumes an account value of \$1,000.00 on May 1, 2022, with the same investment held until October 31, 2022.

Together with the value of your account, you may use this information to estimate the operating expenses that you paid over the period. Simply divide your account value at October 31, 2022, by \$1,000.00, then multiply it by the "expenses paid" for your share class from the table. For example, for an account value of \$8,600.00, the operating expenses should be calculated as follows:

### Example

$$\left[ \frac{\text{My account value}}{\$8,600.00} / \$1,000.00 = 8.6 \right] \times \$ \left[ \begin{array}{c} \text{"expenses paid"} \\ \text{from table} \end{array} \right] = \text{My actual expenses}$$

## Hypothetical example for comparison purposes

The second line of each share class in the table on the following page allows you to compare the fund's ongoing operating expenses with those of any other fund. It provides an example of the fund's hypothetical account values and hypothetical expenses based on each class's actual expense ratio and an assumed 5% annualized return before expenses (which is not the class's actual return). It assumes an account value of \$1,000.00 on May 1, 2022, with the same investment held until October 31, 2022. Look in any other fund shareholder report to find its hypothetical example and you will be able to compare these expenses. Please remember that these hypothetical account values and expenses may not be used to estimate the actual ending account balance or expenses you paid for the period.

Remember, these examples do not include any transaction costs, therefore, these examples will not help you to determine the relative total costs of owning different funds. If transaction costs were included, your expenses would have been higher. See the prospectuses for details regarding transaction costs.

## SHAREHOLDER EXPENSE EXAMPLE CHART

		Account value on 5-1-2022	Ending value on 10-31-2022	Expenses paid during period ended 10-31-2022 <sup>1</sup>	Annualized expense ratio
<b>Class A</b>	Actual expenses/actual returns	\$1,000.00	\$ 939.50	\$5.48	1.12%
	Hypothetical example	1,000.00	1,019.60	5.70	1.12%
<b>Class C</b>	Actual expenses/actual returns	1,000.00	936.10	9.13	1.87%
	Hypothetical example	1,000.00	1,015.80	9.50	1.87%
<b>Class I</b>	Actual expenses/actual returns	1,000.00	940.70	4.26	0.87%
	Hypothetical example	1,000.00	1,020.80	4.43	0.87%
<b>Class R6</b>	Actual expenses/actual returns	1,000.00	941.30	3.72	0.76%
	Hypothetical example	1,000.00	1,021.40	3.87	0.76%

<sup>1</sup> Expenses are equal to the annualized expense ratio, multiplied by the average account value over the period, multiplied by 184/365 (to reflect the one-half year period).

# Fund's investments

AS OF 10-31-22

	Shares	Value
<b>Common stocks 98.5%</b>		<b>\$138,199,070</b>
(Cost \$108,402,972)		
<b>Communication services 6.5%</b>		<b>9,102,628</b>
<b>Diversified telecommunication services 1.2%</b>		
Verizon Communications, Inc.	44,349	1,657,322
<b>Entertainment 1.1%</b>		
The Walt Disney Company (A)	14,188	1,511,590
<b>Interactive media and services 4.2%</b>		
Alphabet, Inc., Class A (A)	62,784	5,933,716
<b>Consumer discretionary 11.4%</b>		<b>16,050,269</b>
<b>Auto components 0.7%</b>		
Aptiv PLC (A)	10,433	950,133
<b>Hotels, restaurants and leisure 1.8%</b>		
Starbucks Corp.	29,237	2,531,632
<b>Multiline retail 2.5%</b>		
Target Corp.	21,759	3,573,916
<b>Specialty retail 4.4%</b>		
The Home Depot, Inc.	6,063	1,795,436
The TJX Companies, Inc.	40,317	2,906,856
Tractor Supply Company	6,956	1,528,720
<b>Textiles, apparel and luxury goods 2.0%</b>		
Lululemon Athletica, Inc. (A)	4,524	1,488,577
NIKE, Inc., Class B	13,757	1,274,999
<b>Consumer staples 7.8%</b>		<b>10,939,646</b>
<b>Food and staples retailing 4.1%</b>		
Costco Wholesale Corp.	6,986	3,503,479
Sysco Corp.	25,545	2,211,175
<b>Food products 1.1%</b>		
McCormick & Company, Inc.	19,236	1,512,719
<b>Household products 1.1%</b>		
The Procter & Gamble Company	11,757	1,583,315
<b>Personal products 1.5%</b>		
Unilever PLC, ADR	46,780	2,128,958
<b>Financials 10.0%</b>		<b>14,073,821</b>
<b>Banks 5.4%</b>		
Bank of America Corp.	75,526	2,721,957
First Republic Bank	9,848	1,182,745
KeyCorp	69,955	1,250,096
SVB Financial Group (A)	4,585	1,058,952

	Shares	Value
<b>Financials (continued)</b>		
<b>Banks (continued)</b>		
The PNC Financial Services Group, Inc.	8,186	\$1,324,740
<b>Capital markets 1.4%</b>		
LPL Financial Holdings, Inc.	8,002	2,045,711
<b>Insurance 3.2%</b>		
Aflac, Inc.	27,453	1,787,465
The Travelers Companies, Inc.	14,649	2,702,155
<b>Health care 16.7%</b>		<b>23,350,672</b>
<b>Health care equipment and supplies 2.1%</b>		
Baxter International, Inc.	13,634	741,008
Medtronic PLC	11,048	964,932
Stryker Corp.	5,355	1,227,580
<b>Health care providers and services 6.9%</b>		
CVS Health Corp.	23,298	2,206,321
Elevance Health, Inc.	8,618	4,712,060
UnitedHealth Group, Inc.	5,078	2,819,052
<b>Life sciences tools and services 2.6%</b>		
IQVIA Holdings, Inc. (A)	6,494	1,361,597
Thermo Fisher Scientific, Inc.	2,739	1,407,764
West Pharmaceutical Services, Inc.	3,601	828,590
<b>Pharmaceuticals 5.1%</b>		
AstraZeneca PLC, ADR	31,208	1,835,342
Merck & Company, Inc.	34,531	3,494,537
Novo Nordisk A/S, ADR	16,096	1,751,889
<b>Industrials 10.4%</b>		<b>14,535,946</b>
<b>Air freight and logistics 1.4%</b>		
United Parcel Service, Inc., Class B	11,911	1,998,308
<b>Building products 1.7%</b>		
Trane Technologies PLC	14,619	2,333,631
<b>Commercial services and supplies 1.1%</b>		
Waste Management, Inc.	9,941	1,574,356
<b>Electrical equipment 3.1%</b>		
Eaton Corp. PLC	17,511	2,627,876
Rockwell Automation, Inc.	6,802	1,736,551
<b>Machinery 1.9%</b>		
Deere & Company	6,586	2,606,871
<b>Road and rail 1.2%</b>		
JB Hunt Transport Services, Inc.	9,694	1,658,353

	Shares	Value
<b>Information technology 27.7%</b>		<b>\$38,860,369</b>
<b>IT services 5.2%</b>		
Accenture PLC, Class A	6,432	1,826,045
Mastercard, Inc., Class A	10,864	3,565,348
Visa, Inc., Class A	9,572	1,982,936
<b>Semiconductors and semiconductor equipment 5.6%</b>		
ASML Holding NV, NYRS	2,708	1,279,313
First Solar, Inc. (A)	11,018	1,603,890
NVIDIA Corp.	11,202	1,511,934
NXP Semiconductors NV	7,386	1,078,947
Texas Instruments, Inc.	14,742	2,368,007
<b>Software 9.4%</b>		
Adobe, Inc. (A)	5,417	1,725,315
Autodesk, Inc. (A)	8,894	1,905,984
Microsoft Corp.	34,161	7,929,793
Palo Alto Networks, Inc. (A)	9,140	1,568,333
<b>Technology hardware, storage and peripherals 7.5%</b>		
Apple, Inc.	68,570	10,514,524
<b>Materials 2.6%</b>		<b>3,687,034</b>
<b>Chemicals 2.6%</b>		
Ecolab, Inc.	7,171	1,126,349
International Flavors & Fragrances, Inc.	11,048	1,078,395
Linde PLC	4,985	1,482,290
<b>Real estate 3.6%</b>		<b>5,070,260</b>
<b>Equity real estate investment trusts 3.6%</b>		
American Tower Corp.	12,219	2,531,655
AvalonBay Communities, Inc.	6,925	1,212,706
Prologis, Inc.	11,972	1,325,899
<b>Utilities 1.8%</b>		<b>2,528,425</b>
<b>Electric utilities 0.9%</b>		
Avangrid, Inc.	31,146	1,267,019
<b>Water utilities 0.9%</b>		
American Water Works Company, Inc.	8,679	1,261,406
	<b>Yield (%)</b>	<b>Shares</b>
<b>Short-term investments 1.3%</b>		<b>Value</b>
(Cost \$1,853,069)		<b>\$1,853,069</b>
<b>Short-term funds 1.3%</b>		<b>1,853,069</b>
Federated Government Obligations Fund, Institutional Class	2.8914(B)	1,853,069

<b>Total investments (Cost \$110,256,041) 99.8%</b>	<b>\$140,052,139</b>
<b>Other assets and liabilities, net 0.2%</b>	<b>236,075</b>
<b>Total net assets 100.0%</b>	<b>\$140,288,214</b>

The percentage shown for each investment category is the total value of the category as a percentage of the net assets of the fund.

**Security Abbreviations and Legend**

ADR American Depositary Receipt

NYRS New York Registry Shares

(A) Non-income producing security.

(B) The rate shown is the annualized seven-day yield as of 10-31-22.

At 10-31-22, the aggregate cost of investments for federal income tax purposes was \$110,535,840. Net unrealized appreciation aggregated to \$29,516,299, of which \$34,088,703 related to gross unrealized appreciation and \$4,572,404 related to gross unrealized depreciation.

# Financial statements

## STATEMENT OF ASSETS AND LIABILITIES 10-31-22

<b>Assets</b>	
Unaffiliated investments, at value (Cost \$110,256,041)	\$140,052,139
Cash	8,032
Dividends and interest receivable	121,805
Receivable for fund shares sold	275,308
Other assets	35,872
<b>Total assets</b>	<b>140,493,156</b>
<b>Liabilities</b>	
Payable for investments purchased	81,130
Payable for fund shares repurchased	26,590
Payable to affiliates	
Investment management fees	639
Accounting and legal services fees	8,793
Transfer agent fees	12,908
Trustees' fees	181
Other liabilities and accrued expenses	74,701
<b>Total liabilities</b>	<b>204,942</b>
<b>Net assets</b>	<b>\$140,288,214</b>
<b>Net assets consist of</b>	
Paid-in capital	\$111,278,167
Total distributable earnings (loss)	29,010,047
<b>Net assets</b>	<b>\$140,288,214</b>
<b>Net asset value per share</b>	
Based on net asset value and shares outstanding - the fund has an unlimited number of shares authorized with no par value	
Class A (\$22,212,622 ÷ 1,254,840 shares) <sup>1</sup>	\$17.70
Class C (\$4,068,665 ÷ 237,285 shares) <sup>1</sup>	\$17.15
Class I (\$108,480,042 ÷ 6,105,916 shares)	\$17.77
Class R6 (\$5,526,885 ÷ 310,690 shares)	\$17.79
<b>Maximum offering price per share</b>	
Class A (net asset value per share ÷ 95%) <sup>2</sup>	\$18.63

<sup>1</sup> Redemption price per share is equal to net asset value less any applicable contingent deferred sales charge.

<sup>2</sup> On single retail sales of less than \$50,000. On sales of \$50,000 or more and on group sales the offering price is reduced.



**STATEMENT OF OPERATIONS** For the year ended 10-31-22

<b>Investment income</b>	
Dividends	\$2,353,820
Interest	19,994
Less foreign taxes withheld	(6,590)
<b>Total investment income</b>	<b>2,367,224</b>
<b>Expenses</b>	
Investment management fees	1,304,520
Distribution and service fees	100,504
Accounting and legal services fees	26,023
Transfer agent fees	194,941
Trustees' fees	3,234
Custodian fees	43,681
State registration fees	82,108
Printing and postage	14,806
Professional fees	60,990
Other	23,449
<b>Total expenses</b>	<b>1,854,256</b>
Less expense reductions	(253,931)
<b>Net expenses</b>	<b>1,600,325</b>
<b>Net investment income</b>	<b>766,899</b>
<b>Realized and unrealized gain (loss)</b>	
<b>Net realized gain (loss) on</b>	
Unaffiliated investments	(1,243,080)
	<b>(1,243,080)</b>
<b>Change in net unrealized appreciation (depreciation) of</b>	
Unaffiliated investments	(36,468,276)
	<b>(36,468,276)</b>
<b>Net realized and unrealized loss</b>	<b>(37,711,356)</b>
<b>Decrease in net assets from operations</b>	<b>\$(36,944,457)</b>

## STATEMENTS OF CHANGES IN NET ASSETS

	Year ended 10-31-22	Year ended 10-31-21
<b>Increase (decrease) in net assets</b>		
<b>From operations</b>		
Net investment income	\$766,899	\$308,362
Net realized gain (loss)	(1,243,080)	6,027,240
Change in net unrealized appreciation (depreciation)	(36,468,276)	38,428,765
<b>Increase (decrease) in net assets resulting from operations</b>	<b>(36,944,457)</b>	<b>44,764,367</b>
<b>Distributions to shareholders</b>		
From earnings		
Class A	(611,278)	(159,536)
Class C	(161,131)	(42,081)
Class I	(5,092,980)	(1,766,772)
Class R6	(141,671)	(30,277)
<b>Total distributions</b>	<b>(6,007,060)</b>	<b>(1,998,666)</b>
From fund share transactions		
Fund share transactions	(9,279,540)	52,622,759
Issued in reorganization	—	31,731,502
<b>From fund share transactions</b>	<b>(9,279,540)</b>	<b>84,354,261</b>
<b>Total increase (decrease)</b>	<b>(52,231,057)</b>	<b>127,119,962</b>
<b>Net assets</b>		
Beginning of year	192,519,271	65,399,309
<b>End of year</b>	<b>\$140,288,214</b>	<b>\$192,519,271</b>

# Financial highlights

CLASS A SHARES Period ended	10-31-22	10-31-21	10-31-20	10-31-19	10-31-18
<b>Per share operating performance</b>					
<b>Net asset value, beginning of period</b>	<b>\$22.34</b>	<b>\$15.63</b>	<b>\$14.48</b>	<b>\$12.79</b>	<b>\$11.81</b>
Net investment income <sup>1</sup>	0.05	— <sup>2</sup>	0.06	0.07	0.06
Net realized and unrealized gain (loss) on investments	(4.04)	7.09	1.28	1.88	1.04
<b>Total from investment operations</b>	<b>(3.99)</b>	<b>7.09</b>	<b>1.34</b>	<b>1.95</b>	<b>1.10</b>
<b>Less distributions</b>					
From net investment income	— <sup>2</sup>	(0.05)	(0.07)	(0.05)	(0.03)
From net realized gain	(0.65)	(0.33)	(0.12)	(0.21)	(0.09)
<b>Total distributions</b>	<b>(0.65)</b>	<b>(0.38)</b>	<b>(0.19)</b>	<b>(0.26)</b>	<b>(0.12)</b>
<b>Net asset value, end of period</b>	<b>\$17.70</b>	<b>\$22.34</b>	<b>\$15.63</b>	<b>\$14.48</b>	<b>\$12.79</b>
<b>Total return (%)<sup>3,4</sup></b>	<b>(18.36)</b>	<b>46.10</b>	<b>9.29</b>	<b>15.59</b>	<b>9.41</b>
<b>Ratios and supplemental data</b>					
Net assets, end of period (in millions)	\$22	\$20	\$5	\$9	\$6
Ratios (as a percentage of average net assets):					
Expenses before reductions	1.26	1.30	1.46	1.47	1.55
Expenses including reductions	1.12	1.15	1.18	1.18	1.17
Net investment income	0.25	0.01	0.43	0.54	0.46
Portfolio turnover (%)	16	14 <sup>5</sup>	30	21	22

<sup>1</sup> Based on average daily shares outstanding.

<sup>2</sup> Less than \$0.005 per share.

<sup>3</sup> Total returns would have been lower had certain expenses not been reduced during the applicable periods.

<sup>4</sup> Does not reflect the effect of sales charges, if any.

<sup>5</sup> Excludes merger activity.

CLASS C SHARES Period ended	10-31-22	10-31-21	10-31-20	10-31-19	10-31-18
<b>Per share operating performance</b>					
<b>Net asset value, beginning of period</b>	<b>\$21.82</b>	<b>\$15.34</b>	<b>\$14.26</b>	<b>\$12.64</b>	<b>\$11.73</b>
Net investment loss <sup>1</sup>	(0.09)	(0.14)	(0.05)	(0.03)	(0.04)
Net realized and unrealized gain (loss) on investments	(3.93)	6.95	1.25	1.86	1.04
<b>Total from investment operations</b>	<b>(4.02)</b>	<b>6.81</b>	<b>1.20</b>	<b>1.83</b>	<b>1.00</b>
<b>Less distributions</b>					
From net realized gain	(0.65)	(0.33)	(0.12)	(0.21)	(0.09)
<b>Net asset value, end of period</b>	<b>\$17.15</b>	<b>\$21.82</b>	<b>\$15.34</b>	<b>\$14.26</b>	<b>\$12.64</b>
<b>Total return (%)<sup>2,3</sup></b>	<b>(18.96)</b>	<b>45.03</b>	<b>8.47</b>	<b>14.78</b>	<b>8.61</b>
<b>Ratios and supplemental data</b>					
Net assets, end of period (in millions)	\$4	\$5	\$2	\$2	\$2
Ratios (as a percentage of average net assets):					
Expenses before reductions	2.01	2.05	2.21	2.22	2.30
Expenses including reductions	1.87	1.90	1.93	1.93	1.92
Net investment loss	(0.50)	(0.73)	(0.34)	(0.21)	(0.30)
Portfolio turnover (%)	16	14 <sup>4</sup>	30	21	22

<sup>1</sup> Based on average daily shares outstanding.

<sup>2</sup> Total returns would have been lower had certain expenses not been reduced during the applicable periods.

<sup>3</sup> Does not reflect the effect of sales charges, if any.

<sup>4</sup> Excludes merger activity.

<b>CLASS I SHARES Period ended</b>	<b>10-31-22</b>	<b>10-31-21</b>	<b>10-31-20</b>	<b>10-31-19</b>	<b>10-31-18</b>
<b>Per share operating performance</b>					
<b>Net asset value, beginning of period</b>	<b>\$22.41</b>	<b>\$15.67</b>	<b>\$14.51</b>	<b>\$12.82</b>	<b>\$11.84</b>
Net investment income <sup>1</sup>	0.10	0.06	0.10	0.11	0.09
Net realized and unrealized gain (loss) on investments	(4.04)	7.10	1.28	1.87	1.04
<b>Total from investment operations</b>	<b>(3.94)</b>	<b>7.16</b>	<b>1.38</b>	<b>1.98</b>	<b>1.13</b>
<b>Less distributions</b>					
From net investment income	(0.05)	(0.09)	(0.10)	(0.08)	(0.06)
From net realized gain	(0.65)	(0.33)	(0.12)	(0.21)	(0.09)
<b>Total distributions</b>	<b>(0.70)</b>	<b>(0.42)</b>	<b>(0.22)</b>	<b>(0.29)</b>	<b>(0.15)</b>
<b>Net asset value, end of period</b>	<b>\$17.77</b>	<b>\$22.41</b>	<b>\$15.67</b>	<b>\$14.51</b>	<b>\$12.82</b>
<b>Total return (%)<sup>2</sup></b>	<b>(18.13)</b>	<b>46.49</b>	<b>9.58</b>	<b>15.86</b>	<b>9.64</b>
<b>Ratios and supplemental data</b>					
Net assets, end of period (in millions)	\$108	\$164	\$58	\$51	\$42
Ratios (as a percentage of average net assets):					
Expenses before reductions	1.01	1.05	1.21	1.23	1.31
Expenses including reductions	0.87	0.90	0.93	0.93	0.93
Net investment income	0.49	0.28	0.64	0.79	0.69
Portfolio turnover (%)	16	14 <sup>3</sup>	30	21	22

<sup>1</sup> Based on average daily shares outstanding.

<sup>2</sup> Total returns would have been lower had certain expenses not been reduced during the applicable periods.

<sup>3</sup> Excludes merger activity.

<b>CLASS R6 SHARES</b> Period ended	<b>10-31-22</b>	<b>10-31-21</b>	<b>10-31-20</b>	<b>10-31-19</b>	<b>10-31-18</b>
<b>Per share operating performance</b>					
<b>Net asset value, beginning of period</b>	<b>\$22.44</b>	<b>\$15.69</b>	<b>\$14.52</b>	<b>\$12.83</b>	<b>\$11.85</b>
Net investment income <sup>1</sup>	0.12	0.07	0.12	0.12	0.10
Net realized and unrealized gain (loss) on investments	(4.05)	7.11	1.28	1.87	1.04
<b>Total from investment operations</b>	<b>(3.93)</b>	<b>7.18</b>	<b>1.40</b>	<b>1.99</b>	<b>1.14</b>
<b>Less distributions</b>					
From net investment income	(0.07)	(0.10)	(0.11)	(0.09)	(0.07)
From net realized gain	(0.65)	(0.33)	(0.12)	(0.21)	(0.09)
<b>Total distributions</b>	<b>(0.72)</b>	<b>(0.43)</b>	<b>(0.23)</b>	<b>(0.30)</b>	<b>(0.16)</b>
<b>Net asset value, end of period</b>	<b>\$17.79</b>	<b>\$22.44</b>	<b>\$15.69</b>	<b>\$14.52</b>	<b>\$12.83</b>
<b>Total return (%)<sup>2</sup></b>	<b>(18.07)</b>	<b>46.63</b>	<b>9.75</b>	<b>15.97</b>	<b>9.76</b>
<b>Ratios and supplemental data</b>					
Net assets, end of period (in millions)	\$6	\$4	\$1	\$2	\$1
Ratios (as a percentage of average net assets):					
Expenses before reductions	0.91	0.94	1.10	1.12	1.20
Expenses including reductions	0.76	0.79	0.82	0.82	0.82
Net investment income	0.61	0.37	0.77	0.90	0.80
Portfolio turnover (%)	16	14 <sup>3</sup>	30	21	22

<sup>1</sup> Based on average daily shares outstanding.

<sup>2</sup> Total returns would have been lower had certain expenses not been reduced during the applicable periods.

<sup>3</sup> Excludes merger activity.

# Notes to financial statements

## Note 1 — Organization

John Hancock ESG Large Cap Core Fund (the fund) is a series of John Hancock Investment Trust (the Trust), an open-end management investment company organized as a Massachusetts business trust and registered under the Investment Company Act of 1940, as amended (the 1940 Act). The investment objective of the fund is to seek long-term capital appreciation.

The fund may offer multiple classes of shares. The shares currently outstanding are detailed in the Statement of assets and liabilities. Class A and Class C shares are offered to all investors. Class I shares are offered to institutions and certain investors. Class R6 shares are only available to certain retirement plans, institutions and other investors. Class C shares convert to Class A shares eight years after purchase (certain exclusions may apply). Shareholders of each class have exclusive voting rights to matters that affect that class. The distribution and service fees, if any, and transfer agent fees for each class may differ.

## Note 2 — Significant accounting policies

The financial statements have been prepared in conformity with accounting principles generally accepted in the United States of America (US GAAP), which require management to make certain estimates and assumptions as of the date of the financial statements. Actual results could differ from those estimates and those differences could be significant. The fund qualifies as an investment company under Topic 946 of Accounting Standards Codification of US GAAP.

Events or transactions occurring after the end of the fiscal period through the date that the financial statements were issued have been evaluated in the preparation of the financial statements. The following summarizes the significant accounting policies of the fund:

**Security valuation.** Investments are stated at value as of the scheduled close of regular trading on the New York Stock Exchange (NYSE), normally at 4:00 P.M., Eastern Time. In case of emergency or other disruption resulting in the NYSE not opening for trading or the NYSE closing at a time other than the regularly scheduled close, the net asset value (NAV) may be determined as of the regularly scheduled close of the NYSE pursuant to the Advisor's Valuation Policies and Procedures.

In order to value the securities, the fund uses the following valuation techniques: Equity securities, including exchange-traded or closed-end funds, are typically valued at the last sale price or official closing price on the exchange or principal market where the security trades. In the event there were no sales during the day or closing prices are not available, the securities are valued using the last available bid price. Investments by the fund in open-end mutual funds are valued at their respective NAVs each business day.

In certain instances, the Pricing Committee of the Advisor may determine to value equity securities using prices obtained from another exchange or market if trading on the exchange or market on which prices are typically obtained did not open for trading as scheduled, or if trading closed earlier than scheduled, and trading occurred as normal on another exchange or market.

Other portfolio securities and assets, for which reliable market quotations are not readily available, are valued at fair value as determined in good faith by the Pricing Committee following procedures established by the Advisor and adopted by the Board of Trustees. The frequency with which these fair valuation procedures are used cannot be predicted and fair value of securities may differ significantly from the value that would have been used had a ready market for such securities existed.

The fund uses a three-tier hierarchy to prioritize the pricing assumptions, referred to as inputs, used in valuation techniques to measure fair value. Level 1 includes securities valued using quoted prices in active markets for identical securities, including registered investment companies. Level 2 includes securities valued using other significant observable inputs. Observable inputs may include quoted prices for similar securities, interest rates, prepayment speeds and credit risk. Prices for securities valued using these inputs are received from independent pricing vendors and brokers and are based on an evaluation of the inputs described. Level 3 includes securities

valued using significant unobservable inputs when market prices are not readily available or reliable, including the Advisor's assumptions in determining the fair value of investments. Factors used in determining value may include market or issuer specific events or trends, changes in interest rates and credit quality. The inputs or methodology used for valuing securities are not necessarily an indication of the risks associated with investing in those securities. Changes in valuation techniques and related inputs may result in transfers into or out of an assigned level within the disclosure hierarchy.

As of October 31, 2022, all investments are categorized as Level 1 under the hierarchy described above.

**Real estate investment trusts.** The fund may invest in real estate investment trusts (REITs). Distributions from REITs may be recorded as income and subsequently characterized by the REIT at the end of their fiscal year as a reduction of cost of investments and/or as a realized gain. As a result, the fund will estimate the components of distributions from these securities. Such estimates are revised when the actual components of the distributions are known.

**Security transactions and related investment income.** Investment security transactions are accounted for on a trade date plus one basis for daily NAV calculations. However, for financial reporting purposes, investment transactions are reported on trade date. Interest income is accrued as earned. Dividend income is recorded on ex-date, except for dividends of certain foreign securities where the dividend may not be known until after the ex-date. In those cases, dividend income, net of withholding taxes, is recorded when the fund becomes aware of the dividends. Non-cash dividends, if any, are recorded at the fair market value of the securities received. Gains and losses on securities sold are determined on the basis of identified cost and may include proceeds from litigation.

**Foreign taxes.** The fund may be subject to withholding tax on income, capital gains or repatriations imposed by certain countries, a portion of which may be recoverable. Foreign taxes are accrued based upon the fund's understanding of the tax rules and rates that exist in the foreign markets in which it invests. Taxes are accrued based on gains realized by the fund as a result of certain foreign security sales. In certain circumstances, estimated taxes are accrued based on unrealized appreciation of such securities. Investment income is recorded net of foreign withholding taxes.

**Overdraft.** The fund may have the ability to borrow from banks for temporary or emergency purposes, including meeting redemption requests that otherwise might require the untimely sale of securities. Pursuant to the fund's custodian agreement, the custodian may loan money to the fund to make properly authorized payments. The fund is obligated to repay the custodian for any overdraft, including any related costs or expenses. The custodian may have a lien, security interest or security entitlement in any fund property that is not otherwise segregated or pledged, to the extent of any overdraft, and to the maximum extent permitted by law.

**Line of credit.** The fund and other affiliated funds have entered into a syndicated line of credit agreement with Citibank, N.A. as the administrative agent that enables them to participate in a \$1 billion unsecured committed line of credit. Excluding commitments designated for a certain fund and subject to the needs of all other affiliated funds, the fund can borrow up to an aggregate commitment amount of \$750 million, subject to asset coverage and other limitations as specified in the agreement. A commitment fee payable at the end of each calendar quarter, based on the average daily unused portion of the line of credit, is charged to each participating fund based on a combination of fixed and asset-based allocations and is reflected in Other expenses on the Statement of operations. For the year ended October 31, 2022, the fund had no borrowings under the line of credit. Commitment fees for the year ended October 31, 2022 were \$3,687.

**Expenses.** Within the John Hancock group of funds complex, expenses that are directly attributable to an individual fund are allocated to such fund. Expenses that are not readily attributable to a specific fund are allocated among all funds in an equitable manner, taking into consideration, among other things, the nature and type of expense and the fund's relative net assets. Expense estimates are accrued in the period to which they relate and adjustments are made when actual amounts are known.



**Class allocations.** Income, common expenses and realized and unrealized gains (losses) are determined at the fund level and allocated daily to each class of shares based on the net assets of the class. Class-specific expenses, such as distribution and service fees, if any, and transfer agent fees, for all classes, are charged daily at the class level based on the net assets of each class and the specific expense rates applicable to each class.

**Federal income taxes.** The fund intends to continue to qualify as a regulated investment company by complying with the applicable provisions of the Internal Revenue Code and will not be subject to federal income tax on taxable income that is distributed to shareholders. Therefore, no federal income tax provision is required.

For federal income tax purposes, as of October 31, 2022, the fund has a short-term capital loss carryforward of \$943,998 and a long-term capital loss carryforward of \$158,724 available to offset future net realized capital gains. These carryforwards do not expire.

As of October 31, 2022, the fund had no uncertain tax positions that would require financial statement recognition, derecognition or disclosure. The fund's federal tax returns are subject to examination by the Internal Revenue Service for a period of three years.

**Distribution of income and gains.** Distributions to shareholders from net investment income and net realized gains, if any, are recorded on the ex-date. The fund generally declares and pays dividends annually. Capital gain distributions, if any, are typically distributed annually.

The tax character of distributions for the years ended October 31, 2022 and 2021 was as follows:

	October 31, 2022	October 31, 2021
Ordinary income	\$370,164	\$398,168
Long-term capital gains	5,636,896	1,600,498
<b>Total</b>	<b>\$6,007,060</b>	<b>\$1,998,666</b>

Distributions paid by the fund with respect to each class of shares are calculated in the same manner, at the same time and in the same amount, except for the effect of class level expenses that may be applied differently to each class. As of October 31, 2022, the components of distributable earnings on a tax basis consisted of \$596,470 of undistributed ordinary income.

Such distributions and distributable earnings, on a tax basis, are determined in conformity with income tax regulations, which may differ from US GAAP. Distributions in excess of tax basis earnings and profits, if any, are reported in the fund's financial statements as a return of capital.

Capital accounts within the financial statements are adjusted for permanent book-tax differences. These adjustments have no impact on net assets or the results of operations. Temporary book-tax differences, if any, will reverse in a subsequent period. Book-tax differences are primarily attributable to wash sale loss deferrals.

### Note 3 — Guarantees and indemnifications

Under the Trust's organizational documents, its Officers and Trustees are indemnified against certain liabilities arising out of the performance of their duties to the Trust, including the fund. Additionally, in the normal course of business, the fund enters into contracts with service providers that contain general indemnification clauses. The fund's maximum exposure under these arrangements is unknown, as this would involve future claims that may be made against the fund that have not yet occurred. The risk of material loss from such claims is considered remote.

### Note 4 — Fees and transactions with affiliates

John Hancock Investment Management LLC (the Advisor) serves as investment advisor for the fund. John Hancock Investment Management Distributors LLC (the Distributor), an affiliate of the Advisor, serves as principal underwriter of the fund. The Advisor and the Distributor are indirect, principally owned subsidiaries of John Hancock Life Insurance Company (U.S.A.), which in turn is a subsidiary of Manulife Financial Corporation.

**Management fee.** The fund has an investment management agreement with the Advisor under which the fund pays a daily management fee to the Advisor equivalent on an annual basis to the sum of: a) 0.750% of the first \$250 million of the fund's average daily net assets; b) 0.725% of the next \$250 million of the fund's average daily net assets; c) 0.700% of the next \$500 million of the fund's average daily net assets; and d) 0.700% of the fund's average daily net assets in excess of \$1 billion. If net assets exceed \$1 billion, then the advisory fee to be paid is 0.700% on all asset levels of average daily net assets. The Advisor has a subadvisory agreement with Trillium Asset Management, LLC. The fund is not responsible for payment of the subadvisory fees.

The Advisor has contractually agreed to waive a portion of its management fee and/or reimburse expenses for certain funds of the John Hancock group of funds complex, including the fund (the participating portfolios). This waiver is based upon aggregate net assets of all the participating portfolios. The amount of the reimbursement is calculated daily and allocated among all the participating portfolios in proportion to the daily net assets of each fund. During the year ended October 31, 2022, this waiver amounted to 0.01% of the fund's average daily net assets. This arrangement expires on July 31, 2024, unless renewed by mutual agreement of the fund and the Advisor based upon a determination that this is appropriate under the circumstances at that time.

The Advisor has contractually agreed to reduce its management fee or, if necessary, make payment to the fund in an amount equal to the amount by which expenses of the fund exceed 0.75% of average daily net assets of the fund. Expenses of the fund means all expenses of the fund, excluding taxes, brokerage commissions, interest expense, litigation and indemnification expenses and other extraordinary expenses not incurred in the ordinary course of the fund's business, class-specific expenses, borrowing costs, prime brokerage fees, acquired fund fees and expenses paid indirectly, and short dividend expense. This agreement expires on February 28, 2023, unless renewed by mutual agreement of the Advisor and the fund based upon a determination that this is appropriate under the circumstances at that time.

For the year ended October 31, 2022, the expense reductions described above amounted to the following:

Class	Expense reduction	Class	Expense reduction
Class A	\$29,693	Class R6	\$7,098
Class C	7,208	<b>Total</b>	<b>\$253,931</b>
Class I	209,932		

Expenses waived or reimbursed in the current fiscal period are not subject to recapture in future fiscal periods.

The investment management fees, including the impact of the waivers and reimbursements as described above, incurred for the year ended October 31, 2022, were equivalent to a net annual effective rate of 0.60% of the fund's average daily net assets.

**Accounting and legal services.** Pursuant to a service agreement, the fund reimburses the Advisor for all expenses associated with providing the administrative, financial, legal, compliance, accounting and recordkeeping services to the fund, including the preparation of all tax returns, periodic reports to shareholders and regulatory reports, among other services. These expenses are allocated to each share class based on its relative net assets at the time the expense was incurred. These accounting and legal services fees incurred, for the year ended October 31, 2022, amounted to an annual rate of 0.02% of the fund's average daily net assets.

**Distribution and service plans.** The fund has a distribution agreement with the Distributor. The fund has adopted distribution and service plans for certain classes as detailed below pursuant to Rule 12b-1 under the 1940 Act, to pay the Distributor for services provided as the distributor of shares of the fund. The fund may pay up to the following contractual rates of distribution and service fees under these arrangements, expressed as an annual percentage of average daily net assets for each class of the fund's shares:

Class	Rule 12b-1 Fee
Class A	0.25%
Class C	1.00%

**Sales charges.** Class A shares are assessed up-front sales charges, which resulted in payments to the Distributor amounting to \$92,114 for the year ended October 31, 2022. Of this amount, \$14,843 was retained and used for printing prospectuses, advertising, sales literature and other purposes and \$77,271 was paid as sales commissions to broker-dealers.

Class A and Class C shares may be subject to contingent deferred sales charges (CDSCs). Certain Class A shares purchased, including those that are acquired through purchases of \$1 million or more, and redeemed within one year of purchase are subject to a 1.00% sales charge. Class C shares that are redeemed within one year of purchase are subject to a 1.00% CDSC. CDSCs are applied to the lesser of the current market value at the time of redemption or the original purchase cost of the shares being redeemed. Proceeds from CDSCs are used to compensate the Distributor for providing distribution-related services in connection with the sale of these shares. During the year ended October 31, 2022, CDSCs received by the Distributor amounted to \$135 and \$1,195 for Class A and Class C shares, respectively.

**Transfer agent fees.** The John Hancock group of funds has a complex-wide transfer agent agreement with John Hancock Signature Services, Inc. (Signature Services), an affiliate of the Advisor. The transfer agent fees paid to Signature Services are determined based on the cost to Signature Services (Signature Services Cost) of providing recordkeeping services. It also includes out-of-pocket expenses, including payments made to third-parties for recordkeeping services provided to their clients who invest in one or more John Hancock funds. In addition, Signature Services Cost may be reduced by certain fees that Signature Services receives in connection with retirement and small accounts. Signature Services Cost is calculated monthly and allocated, as applicable, to five categories of share classes: Retail Share and Institutional Share Classes of Non-Municipal Bond Funds, Class R6 Shares, Retirement Share Classes and Municipal Bond Share Classes. Within each of these categories, the applicable costs are allocated to the affected John Hancock affiliated funds and/or classes, based on the relative average daily net assets.

**Class level expenses.** Class level expenses for the year ended October 31, 2022 were as follows:

Class	Distribution and service fees	Transfer agent fees
Class A	\$51,145	\$23,569
Class C	49,359	5,682
Class I	—	165,246
Class R6	—	444
<b>Total</b>	<b>\$100,504</b>	<b>\$194,941</b>

**Trustee expenses.** The fund compensates each Trustee who is not an employee of the Advisor or its affiliates. The costs of paying Trustee compensation and expenses are allocated to the fund based on its net assets relative to other funds within the John Hancock group of funds complex.

**Interfund lending program.** Pursuant to an Exemptive Order issued by the SEC, the fund, along with certain other funds advised by the Advisor or its affiliates, may participate in an interfund lending program. This program provides an alternative credit facility allowing the fund to borrow from, or lend money to, other participating

affiliated funds. At period end, no interfund loans were outstanding. Interest expense is included in Other expenses on the Statement of operations. The fund's activity in this program during the period for which loans were outstanding was as follows:

Borrower or Lender	Weighted Average Loan Balance	Days Outstanding	Weighted Average Interest Rate	Interest Income (Expense)
Borrower	\$1,500,000	4	2.16%	\$(360)

#### Note 5 — Fund share transactions

Transactions in fund shares for the years ended October 31, 2022 and 2021 were as follows:

	Year Ended 10-31-22		Year Ended 10-31-21	
	Shares	Amount	Shares	Amount
<b>Class A shares</b>				
Sold	616,558	\$12,215,419	593,862	\$11,576,248
Issued in reorganization (Note 9)	—	—	489,221	9,600,766
Distributions reinvested	28,551	611,278	8,047	139,123
Repurchased	(273,794)	(5,380,178)	(542,317)	(11,059,880)
<b>Net increase</b>	<b>371,315</b>	<b>\$7,446,519</b>	<b>548,813</b>	<b>\$10,256,257</b>
<b>Class C shares</b>				
Sold	50,640	\$999,693	118,358	\$2,215,490
Issued in reorganization (Note 9)	—	—	40,097	771,590
Distributions reinvested	7,721	161,131	2,475	42,081
Repurchased	(63,506)	(1,118,281)	(28,862)	(553,108)
<b>Net increase (decrease)</b>	<b>(5,145)</b>	<b>\$42,543</b>	<b>132,068</b>	<b>\$2,476,053</b>
<b>Class I shares</b>				
Sold	1,895,239	\$37,480,638	3,421,576	\$66,357,717
Issued in reorganization (Note 9)	—	—	1,038,109	20,409,515
Distributions reinvested	150,612	3,229,126	43,557	753,970
Repurchased	(3,239,685)	(60,235,411)	(872,492)	(18,094,914)
<b>Net increase (decrease)</b>	<b>(1,193,834)</b>	<b>\$(19,525,647)</b>	<b>3,630,750</b>	<b>\$69,426,288</b>
<b>Class R6 shares</b>				
Sold	188,231	\$3,728,843	136,541	\$2,699,309
Issued in reorganization (Note 9)	—	—	48,277	949,631
Distributions reinvested	6,605	141,671	1,749	30,277
Repurchased	(58,082)	(1,113,469)	(74,708)	(1,483,554)
<b>Net increase</b>	<b>136,754</b>	<b>\$2,757,045</b>	<b>111,859</b>	<b>\$2,195,663</b>
<b>Total net increase (decrease)</b>	<b>(690,910)</b>	<b>\$(9,279,540)</b>	<b>4,423,490</b>	<b>\$84,354,261</b>

Affiliates of the fund owned 30% of shares of Class I on October 31, 2022. Such concentration of shareholders' capital could have a material effect on the fund if such shareholders redeem from the fund.

### Note 6 — Purchase and sale of securities

Purchases and sales of securities, other than short-term investments, amounted to \$27,727,927 and \$41,516,458, respectively, for the year ended October 31, 2022.

### Note 7 — Industry or sector risk

The fund may invest a large percentage of its assets in one or more particular industries or sectors of the economy. If a large percentage of the fund's assets are economically tied to a single or small number of industries or sectors of the economy, the fund will be less diversified than a more broadly diversified fund, and it may cause the fund to underperform if that industry or sector underperforms. In addition, focusing on a particular industry or sector may make the fund's NAV more volatile. Further, a fund that invests in particular industries or sectors is particularly susceptible to the impact of market, economic, regulatory and other factors affecting those industries or sectors.

### Note 8 — Environmental, social, and governance (ESG) investing risk

Incorporating ESG criteria and investing primarily in instruments that have certain ESG characteristics, as determined by the manager, carries the risk that the fund may perform differently, including underperforming, funds that do not utilize an ESG investment strategy, or funds that utilize different ESG criteria. Although the manager has established its own process for evaluation of ESG factors, successful application of the fund's sustainable investment strategy will depend on the manager's skill in researching, identifying and analyzing material ESG issues as well as on the availability of relevant data. ESG factors may be evaluated differently by different managers, and may not carry the same meaning to all investors and managers. The regulatory landscape with respect to ESG investing in the United States is evolving and any future rules or regulations may require the fund to change its investment process with respect to ESG integration.

### Note 9 — Reorganization

On April 9, 2021, the shareholders of John Hancock Investment Trust (JHIT) ESG All Cap Core Fund (the Acquired Fund) voted to approve an Agreement and Plan of Reorganization (the Agreement) which provided for an exchange of shares of ESG Large Cap Core Fund (the Acquiring Fund) with a value equal to the net assets transferred. The Agreement provided for (a) the acquisition of all the assets, subject to all of the liabilities, of the Acquired Fund in exchange for shares of the Acquiring Fund with a value equal to the net assets transferred; (b) the liquidation of the Acquired Fund; and (c) the distribution to the Acquired Fund's shareholders of such Acquiring Fund's shares. The reorganization was intended to achieve a more consistent long-term performance record and stronger prospects for growth and achieve potential opportunities for economies of scale. As a result of the reorganization, the Acquiring Fund is the legal and accounting survivor.

The reorganization qualified as a tax-free reorganization for federal income tax purposes with no gain or loss recognized by the Acquired Fund or their shareholders. Thus, the investments were transferred to the Acquiring Fund at the Acquired Fund's identified cost. All distributable amounts of net income and realized gains from the Acquired Fund were distributed prior to the reorganization. In addition, the Advisor will bear the costs that are incurred in connection with the reorganization. The effective time of the reorganization occurred immediately after the close of regularly scheduled trading on the New York Stock Exchange (NYSE) on April 16, 2021. The following outlines the reorganization:

Acquiring Portfolio	Acquired Portfolio	Net Asset Value of the Acquired Portfolio	Appreciation of the Acquired Portfolio's Investments	Shares Redeemed by the Acquired Portfolio	Shares Issued by the Acquiring Portfolio	Acquiring Portfolio Net Assets Prior to Combination	Acquiring Portfolio Total Net Assets After Combination
ESG Large Cap Core Fund	JHF ESG All Cap Core Fund	\$31,731,502	\$11,931,742	1,918,989	1,615,704	\$119,285,580	\$151,017,082

See Note 5 for capital shares issued in connection with the above referenced reorganization.

**Note 10 — Coronavirus (COVID-19) pandemic**

The COVID-19 disease has resulted in significant disruptions to global business activity. A widespread health crisis such as a global pandemic could cause substantial market volatility, exchange-trading suspensions, and closures, which may lead to less liquidity in certain instruments, industries, sectors or the markets generally, and may ultimately affect fund performance.

## Report of Independent Registered Public Accounting Firm

---

### To the Board of Trustees of John Hancock Investment Trust and Shareholders of John Hancock ESG Large Cap Core Fund

#### *Opinion on the Financial Statements*

We have audited the accompanying statement of assets and liabilities, including the fund's investments, of John Hancock ESG Large Cap Core Fund (one of the funds constituting John Hancock Investment Trust, referred to hereafter as the "Fund") as of October 31, 2022, the related statement of operations for the year ended October 31, 2022, the statements of changes in net assets for each of the two years in the period ended October 31, 2022, including the related notes, and the financial highlights for each of the five years in the period ended October 31, 2022 (collectively referred to as the "financial statements"). In our opinion, the financial statements present fairly, in all material respects, the financial position of the Fund as of October 31, 2022, the results of its operations for the year then ended, the changes in its net assets for each of the two years in the period ended October 31, 2022 and the financial highlights for each of the five years in the period ended October 31, 2022 in conformity with accounting principles generally accepted in the United States of America.

#### *Basis for Opinion*

These financial statements are the responsibility of the Fund's management. Our responsibility is to express an opinion on the Fund's financial statements based on our audits. We are a public accounting firm registered with the Public Company Accounting Oversight Board (United States) (PCAOB) and are required to be independent with respect to the Fund in accordance with the U.S. federal securities laws and the applicable rules and regulations of the Securities and Exchange Commission and the PCAOB.

We conducted our audits of these financial statements in accordance with the standards of the PCAOB. Those standards require that we plan and perform the audit to obtain reasonable assurance about whether the financial statements are free of material misstatement, whether due to error or fraud.

Our audits included performing procedures to assess the risks of material misstatement of the financial statements, whether due to error or fraud, and performing procedures that respond to those risks. Such procedures included examining, on a test basis, evidence regarding the amounts and disclosures in the financial statements. Our audits also included evaluating the accounting principles used and significant estimates made by management, as well as evaluating the overall presentation of the financial statements. Our procedures included confirmation of securities owned as of October 31, 2022 by correspondence with the custodian and transfer agent. We believe that our audits provide a reasonable basis for our opinion.

/s/ PricewaterhouseCoopers LLP

Boston, Massachusetts

December 14, 2022

We have served as the auditor of one or more investment companies in the John Hancock group of funds since 1988.

# Tax information

(Unaudited)

For federal income tax purposes, the following information is furnished with respect to the distributions of the fund, if any, paid during its taxable year ended October 31, 2022.

The fund reports the maximum amount allowable of its net taxable income as eligible for the corporate dividends-received deduction.

The fund reports the maximum amount allowable of its net taxable income as qualified dividend income as provided in the Jobs and Growth Tax Relief Reconciliation Act of 2003.

The fund reports the maximum amount allowable as Section 163(j) Interest Dividends.

The fund paid \$5,636,896 in long term capital gain dividends.

The fund reports the maximum amount allowable of its Section 199A dividends as defined in Proposed Treasury Regulation §1.199A-3(d).

Eligible shareholders will be mailed a 2022 Form 1099-DIV in early 2023. This will reflect the tax character of all distributions paid in calendar year 2022.

**Please consult a tax advisor regarding the tax consequences of your investment in the fund.**



## SHAREHOLDER MEETING

---

(Unaudited)

The fund held a Special Joint Meeting of Shareholders on Friday, September 9, 2022. The following proposal was considered by the shareholders:

**Proposal:** To elect eight Trustees as members of the Board of Trustees of each of the Trusts.

THE PROPOSAL PASSED ON September 9, 2022.

	<b>Total votes for the nominee</b>	<b>Total votes withheld from the nominee</b>
<b>Independent Trustees</b>		
James R. Boyle	930,432,312.451	29,179,649.679
Frances G. Rathke	931,340,368.276	28,271,593.854
Noni L. Ellison	931,852,358.590	27,759,603.540
Dean C. Garfield	931,587,791.505	28,024,170.625
Patricia Lizarraga	931,662,411.746	27,949,550.384
<b>Non-Independent Trustees</b>		
Andrew G. Arnott	931,573,268.898	28,038,693.232
Marianne Harrison	932,138,670.225	27,473,291.905
Paul Lorentz	931,257,810.391	28,354,151.739

## EVALUATION OF ADVISORY AND SUBADVISORY AGREEMENTS BY THE BOARD OF TRUSTEES

---

This section describes the evaluation by the Board of Trustees (the Board) of John Hancock Investment Trust (the Trust) of the Advisory Agreement (the Advisory Agreement) with John Hancock Investment Management LLC (the Advisor) and the Subadvisory Agreement (the Subadvisory Agreement) with Trillium Asset Management, LLC (the Subadvisor), for John Hancock ESG Large Cap Core Fund (the fund). The Advisory Agreement and Subadvisory Agreement are collectively referred to as the Agreements. Prior to the June 21-23, 2022 videoconference<sup>1</sup> meeting at which the Agreements were approved, the Board also discussed and considered information regarding the proposed continuation of the Agreements at a videoconference meeting held on May 24-25, 2022. The Trustees who are not “interested persons” of the Trust as defined by the Investment Company Act of 1940, as amended (the 1940 Act) (the Independent Trustees) also met separately to evaluate and a third-party consulting firm.

### Approval of Advisory and Subadvisory Agreements

At a videoconference meeting held on June 21-23, 2022, the Board, including the Trustees who are not parties to any Agreement or considered to be interested persons of the Trust under the 1940 Act, reapproved for an annual period the continuation of the Advisory Agreement between the Trust and the Advisor and the Subadvisory Agreement between the Advisor and the Subadvisor with respect to the fund.

In considering the Advisory Agreement and the Subadvisory Agreement, the Board received in advance of the meetings a variety of materials relating to the fund, the Advisor and the Subadvisor, including comparative performance, fee and expense information for a peer group of similar funds prepared by an independent third-party provider of fund data, performance information for an applicable benchmark index; and, with respect to the Subadvisor, comparative performance information for comparably managed accounts, as applicable, and other information provided by the Advisor and the Subadvisor regarding the nature, extent and quality of services provided by the Advisor and the Subadvisor under their respective Agreements, as well as information regarding the Advisor’s revenues and costs of providing services to the fund and any compensation paid to affiliates of the Advisor. At the meetings at which the renewal of the Advisory Agreement and Subadvisory Agreement are considered, particular focus is given to information concerning fund performance, comparability of fees and total expenses, and profitability. However, the Board noted that the evaluation process with respect to the Advisor and the Subadvisor is an ongoing one. In this regard, the Board also took into account discussions with management and information provided to the Board (including its various committees) at prior meetings with respect to the services provided by the Advisor and the Subadvisor to the fund, including quarterly performance reports prepared by management containing reviews of investment results and prior presentations from the Subadvisor with respect to the fund. The information received and considered by the Board in connection with the May and June meetings and throughout the year was both written and oral. The Board also considered the nature, quality, and extent of non-advisory services, if any, to be provided to the fund by the Advisor’s affiliates, including distribution services. The Board considered the Advisory Agreement and the Subadvisory Agreement separately in the course of its review. In doing so, the Board noted the respective roles of the Advisor and Subadvisor in providing services to the fund.

---

<sup>1</sup>On June 19, 2020, as a result of health and safety measures put in place to combat the global COVID-19 pandemic, the Securities and Exchange Commission issued an exemptive order (the “Order”) pursuant to Sections 6(c) and 38(a) of the Investment Company Act of 1940, as amended (the “1940 Act”), that temporarily exempts registered investment management companies from the in-person voting requirements under the 1940 Act, subject to certain requirements, including that votes taken pursuant to the Order are ratified at the next in-person meeting. The Board determined that reliance on the Order was necessary or appropriate due to the circumstances related to current or potential effects of COVID-19 and therefore, the Board’s May and June meetings were held via videoconference in reliance on the Order. This exemptive order supersedes, in part, a similar earlier exemptive order issued by the SEC.

Throughout the process, the Board asked questions of and requested additional information from management. The Board is assisted by counsel for the Trust and the Independent Trustees are also separately assisted by independent legal counsel throughout the process. The Independent Trustees also received a memorandum from their independent legal counsel discussing the legal standards for their consideration of the proposed continuation of the Agreements and discussed the proposed continuation of the Agreements in private sessions with their independent legal counsel at which no representatives of management were present.

### **Approval of Advisory Agreement**

In approving the Advisory Agreement with respect to the fund, the Board, including the Independent Trustees, considered a variety of factors, including those discussed below. The Board also considered other factors (including conditions and trends prevailing generally in the economy, the securities markets, and the industry) and did not treat any single factor as determinative, and each Trustee may have attributed different weights to different factors. The Board's conclusions may be based in part on its consideration of the advisory and subadvisory arrangements in prior years and on the Board's ongoing regular review of fund performance and operations throughout the year.

*Nature, extent, and quality of services.* Among the information received by the Board from the Advisor relating to the nature, extent, and quality of services provided to the fund, the Board reviewed information provided by the Advisor relating to its operations and personnel, descriptions of its organizational and management structure, and information regarding the Advisor's compliance and regulatory history, including its Form ADV. The Board also noted that on a regular basis it receives and reviews information from the Trust's Chief Compliance Officer (CCO) regarding the fund's compliance policies and procedures established pursuant to Rule 38a-1 under the 1940 Act. The Board observed that the scope of services provided by the Advisor, and of the undertakings required of the Advisor in connection with those services, including maintaining and monitoring its own and the fund's compliance programs, risk management programs, liquidity management programs and cybersecurity programs, had expanded over time as a result of regulatory, market and other developments. The Board considered that the Advisor is responsible for the management of the day-to-day operations of the fund, including, but not limited to, general supervision of and coordination of the services provided by the Subadvisor, and is also responsible for monitoring and reviewing the activities of the Subadvisor and other third-party service providers. The Board also considered the significant risks assumed by the Advisor in connection with the services provided to the fund including entrepreneurial risk in sponsoring new funds and ongoing risks including investment, operational, enterprise, litigation, regulatory and compliance risks with respect to all funds.

In considering the nature, extent, and quality of the services provided by the Advisor, the Trustees also took into account their knowledge of the Advisor's management and the quality of the performance of the Advisor's duties, through Board meetings, discussions and reports during the preceding year and through each Trustee's experience as a Trustee of the Trust and of the other trusts in the John Hancock group of funds complex (the John Hancock Fund Complex).

In the course of their deliberations regarding the Advisory Agreement, the Board considered, among other things:

- (a) the skills and competency with which the Advisor has in the past managed the Trust's affairs and its subadvisory relationship, the Advisor's oversight and monitoring of the Subadvisor's investment performance and compliance programs, such as the Subadvisor's compliance with fund policies and objectives, review of brokerage matters, including with respect to trade allocation and best execution and the Advisor's timeliness in responding to performance issues;
- (b) the background, qualifications and skills of the Advisor's personnel;
- (c) the Advisor's compliance policies and procedures and its responsiveness to regulatory changes and fund industry developments;

- (d) the Advisor's administrative capabilities, including its ability to supervise the other service providers for the fund, as well as the Advisor's oversight of any securities lending activity, its monitoring of class action litigation and collection of class action settlements on behalf of the fund, and bringing loss recovery actions on behalf of the fund;
- (e) the financial condition of the Advisor and whether it has the financial wherewithal to provide a high level and quality of services to the fund;
- (f) the Advisor's initiatives intended to improve various aspects of the Trust's operations and investor experience with the fund; and
- (g) the Advisor's reputation and experience in serving as an investment advisor to the Trust and the benefit to shareholders of investing in funds that are part of a family of funds offering a variety of investments.

The Board concluded that the Advisor may reasonably be expected to continue to provide a high quality of services under the Advisory Agreement with respect to the fund.

Investment performance. In considering the fund's performance, the Board noted that it reviews at its regularly scheduled meetings information about the fund's performance results. In connection with the consideration of the Advisory Agreement, the Board:

- (a) reviewed information prepared by management regarding the fund's performance;
- (b) considered the comparative performance of an applicable benchmark index;
- (c) considered the performance of comparable funds, if any, as included in the report prepared by an independent third-party provider of fund data; and
- (d) took into account the Advisor's analysis of the fund's performance and its plans and recommendations regarding the Trust's subadvisory arrangements generally.

The Board noted that while it found the data provided by the independent third-party generally useful it recognized its limitations, including in particular that the data may vary depending on the end date selected and the results of the performance comparisons may vary depending on the selection of the peer group. The Board noted that the fund outperformed its benchmark index and the peer group median for the one-, three- and five-year periods ended December 31, 2021. The Board took into account management's discussion of the fund's performance, including the favorable performance relative to its benchmark index and the peer group for the one-, three- and five-year periods. The Board concluded that the fund's performance has generally been in line with or outperformed the historical performance of comparable funds and the fund's benchmark index.

Fees and expenses. The Board reviewed comparative information prepared by an independent third-party provider of fund data, including, among other data, the fund's contractual and net management fees (and subadvisory fees, to the extent available) and total expenses as compared to similarly situated investment companies deemed to be comparable to the fund in light of the nature, extent and quality of the management and advisory and subadvisory services provided by the Advisor and the Subadvisor. The Board considered the fund's ranking within a smaller group of peer funds chosen by the independent third-party provider, as well as the fund's ranking within a broader group of funds. In comparing the fund's contractual and net management fees to those of comparable funds, the Board noted that such fees include both advisory and administrative costs. The Board noted that net management fees for the fund are higher than the peer group median and net total expenses for the fund are equal to the peer group median.

The Board took into account management's discussion of the fund's expenses. The Board also took into account management's discussion with respect to the overall management fee and the fees of the Subadvisor, including the amount of the advisory fee retained by the Advisor after payment of the subadvisory fee, in each case in light

of the services rendered for those amounts and the risks undertaken by the Advisor. The Board also noted that the Advisor pays the subadvisory fee, and that such fees are negotiated at arm's length with respect to the Subadvisor. In addition, the Board took into account that management had agreed to implement an overall fee waiver across the complex, including the fund, which is discussed further below. The Board also noted actions taken over the past several years to reduce the fund's operating expenses. The Board also noted that, in addition, the Advisor is currently waiving fees and/or reimbursing expenses with respect to the fund and that the fund has breakpoints in its contractual management fee schedule that reduce management fees as assets increase. The Board reviewed information provided by the Advisor concerning the investment advisory fee charged by the Advisor or one of its advisory affiliates to other clients (including other funds in the John Hancock Fund Complex) having similar investment mandates, if any. The Board considered any differences between the Advisor's and Subadvisor's services to the fund and the services they provide to other comparable clients or funds. The Board concluded that the advisory fee paid with respect to the fund is reasonable in light of the nature, extent and quality of the services provided to the fund under the Advisory Agreement.

*Profitability/Fall out benefits.* In considering the costs of the services to be provided and the profits to be realized by the Advisor and its affiliates from the Advisor's relationship with the Trust, the Board:

- (a) reviewed financial information of the Advisor;
- (b) reviewed and considered information presented by the Advisor regarding the net profitability to the Advisor and its affiliates with respect to the fund;
- (c) received and reviewed profitability information with respect to the John Hancock Fund Complex as a whole and with respect to the fund;
- (d) received information with respect to the Advisor's allocation methodologies used in preparing the profitability data and considered that the Advisor hired an independent third-party consultant to provide an analysis of the Advisor's allocation methodologies;
- (e) considered that the John Hancock insurance companies that are affiliates of the Advisor, as shareholders of the Trust directly or through their separate accounts, receive certain tax credits or deductions relating to foreign taxes paid and dividends received by certain funds of the Trust and noted that these tax benefits, which are not available to participants in qualified retirement plans under applicable income tax law, are reflected in the profitability information reviewed by the Board;
- (f) considered that the Advisor also provides administrative services to the fund on a cost basis pursuant to an administrative services agreement;
- (g) noted that affiliates of the Advisor provide transfer agency services and distribution services to the fund, and that the fund's distributor also receives Rule 12b-1 payments to support distribution of the fund;
- (h) noted that the Advisor also derives reputational and other indirect benefits from providing advisory services to the fund;
- (i) noted that the subadvisory fee for the fund is paid by the Advisor and is negotiated at arm's length;
- (j) considered the Advisor's ongoing costs and expenditures necessary to improve services, meet new regulatory and compliance requirements, and adapt to other challenges impacting the fund industry; and
- (k) considered that the Advisor should be entitled to earn a reasonable level of profits in exchange for the level of services it provides to the fund and the risks that it assumes as Advisor, including entrepreneurial, operational, reputational, litigation and regulatory risk.

Based upon its review, the Board concluded that the level of profitability, if any, of the Advisor and its affiliates from their relationship with the fund was reasonable and not excessive.

Economies of scale. In considering the extent to which economies of scale would be realized as the fund grows and whether fee levels reflect these economies of scale for the benefit of fund shareholders, the Board:

- (a) considered that the Advisor has contractually agreed to waive a portion of its management fee for certain funds of the John Hancock Fund Complex, including the fund (the participating portfolios) or otherwise reimburse the expenses of the participating portfolios (the reimbursement). This waiver is based upon aggregate net assets of all the participating portfolios. The amount of the reimbursement is calculated daily and allocated among all the participating portfolios in proportion to the daily net assets of each fund;
- (b) reviewed the fund's advisory fee structure and concluded that: (i) the fund's fee structure contains breakpoints at the subadvisory fee level and that such breakpoints are reflected as breakpoints in the advisory fees for the fund; and (ii) although economies of scale cannot be measured with precision, these arrangements permit shareholders of the fund to benefit from economies of scale if the fund grows. The Board also took into account management's discussion of the fund's advisory fee structure; and
- (c) the Board also considered the effect of the fund's growth in size on its performance and fees. The Board also noted that if the fund's assets increase over time, the fund may realize other economies of scale.

### **Approval of Subadvisory Agreement**

In making its determination with respect to approval of the Subadvisory Agreement, the Board reviewed:

- (1) information relating to the Subadvisor's business, including current subadvisory services to the Trust (and other funds in the John Hancock Fund Complex);
- (2) the historical and current performance of the fund and comparative performance information relating to an applicable benchmark index and comparable funds;
- (3) the subadvisory fee for the fund, including any breakpoints, and to the extent available, comparable fee information prepared by an independent third party provider of fund data; and
- (4) information relating to the nature and scope of any material relationships and their significance to the Trust's Advisor and Subadvisor.

Nature, extent, and quality of services. With respect to the services provided by the Subadvisor, the Board received information provided to the Board by the Subadvisor, including the Subadvisor's Form ADV, as well as took into account information presented throughout the past year. The Board considered the Subadvisor's current level of staffing and its overall resources, as well as received information relating to the Subadvisor's compensation program. The Board reviewed the Subadvisor's history and investment experience, as well as information regarding the qualifications, background, and responsibilities of the Subadvisor's investment and compliance personnel who provide services to the fund. The Board also considered, among other things, the Subadvisor's compliance program and any disciplinary history. The Board also considered the Subadvisor's risk assessment and monitoring process. The Board reviewed the Subadvisor's regulatory history, including whether it was involved in any regulatory actions or investigations as well as material litigation, and any settlements and amelioratory actions undertaken, as appropriate. The Board noted that the Advisor conducts regular, periodic reviews of the Subadvisor and its operations, including regarding investment processes and organizational and staffing matters. The Board also noted that the Trust's CCO and his staff conduct regular, periodic compliance reviews with the Subadvisor and

present reports to the Independent Trustees regarding the same, which includes evaluating the regulatory compliance systems of the Subadvisor and procedures reasonably designed to assure compliance with the federal securities laws. The Board also took into account the financial condition of the Subadvisor.

The Board considered the Subadvisor's investment process and philosophy. The Board took into account that the Subadvisor's responsibilities include the development and maintenance of an investment program for the fund that is consistent with the fund's investment objective, the selection of investment securities and the placement of orders for the purchase and sale of such securities, as well as the implementation of compliance controls related to performance of these services. The Board also received information with respect to the Subadvisor's brokerage policies and practices, including with respect to best execution and soft dollars.

Subadvisor compensation. In considering the cost of services to be provided by the Subadvisor and the profitability to the Subadvisor of its relationship with the fund, the Board noted that the fees under the Subadvisory Agreement are paid by the Advisor and not the fund.

The Board also relied on the ability of the Advisor to negotiate the Subadvisory Agreement with the Subadvisor, which is not affiliated with the Advisor, and the fees thereunder at arm's length. As a result, the costs of the services to be provided and the profits to be realized by the Subadvisor from its relationship with the Trust were not a material factor in the Board's consideration of the Subadvisory Agreement.

The Board also received information regarding the nature and scope (including their significance to the Advisor and its affiliates and to the Subadvisor) of any material relationships with respect to the Subadvisor, which include arrangements in which the Subadvisor or its affiliates provide advisory, distribution, or management services in connection with financial products sponsored by the Advisor or its affiliates, and may include other registered investment companies, a 529 education savings plan, managed separate accounts and exempt group annuity contracts sold to qualified plans. The Board also received information and took into account any other potential conflicts of interest the Advisor might have in connection with the Subadvisory Agreement.

In addition, the Board considered other potential indirect benefits that the Subadvisor and its affiliates may receive from the Subadvisor's relationship with the fund, such as the opportunity to provide advisory services to additional funds in the John Hancock Fund Complex and reputational benefits.

Subadvisory fees. The Board considered that the fund pays an advisory fee to the Advisor and that, in turn, the Advisor pays a subadvisory fee to the Subadvisor. As noted above, the Board also considered the fund's subadvisory fees as compared to similarly situated investment companies deemed to be comparable to the fund as included in the report prepared by the independent third party provider of fund data, to the extent available. The Board noted that the limited size of the Lipper peer group was not sufficient for comparative purposes. The Board also took into account the subadvisory fees paid by the Advisor to the Subadvisor with respect to the fund and compared them to fees charged by the Subadvisor to manage other subadvised portfolios and portfolios not subject to regulation under the 1940 Act, as applicable.

Subadvisor performance. As noted above, the Board considered the fund's performance as compared to the fund's peer group and the benchmark index and noted that the Board reviews information about the fund's performance results at its regularly scheduled meetings. The Board noted the Advisor's expertise and resources in monitoring the performance, investment style and risk-adjusted performance of the Subadvisor. The Board was mindful of the Advisor's focus on the Subadvisor's performance. The Board also noted the Subadvisor's long-term performance record for similar accounts, as applicable.

The Board's decision to approve the Subadvisory Agreement was based on a number of determinations, including the following:

- (1) the Subadvisor has extensive experience and demonstrated skills as a manager;

- (2) the performance of the fund has generally been in line with or outperformed the historical performance of comparable funds and the fund's benchmark index;
- (3) the subadvisory fee is reasonable in relation to the level and quality of services being provided under the Subadvisory Agreement; and
- (4) noted that the subadvisory fees are paid by the Advisor not the fund and that the subadvisory fee breakpoints are reflected as breakpoints in the advisory fees for the fund in order to permit shareholders to benefit from economies of scale if the fund grows.

\* \* \*

Based on the Board's evaluation of all factors that the Board deemed to be material, including those factors described above, the Board, including the Independent Trustees, concluded that renewal of the Advisory Agreement and the Subadvisory Agreement would be in the best interest of the fund and its shareholders. Accordingly, the Board, and the Independent Trustees voting separately, approved the Advisory Agreement and Subadvisory Agreement for an additional one-year period.



# Trustees and Officers

This chart provides information about the Trustees and Officers who oversee your John Hancock fund. Officers elected by the Trustees manage the day-to-day operations of the fund and execute policies formulated by the Trustees.

## Independent Trustees

<b>Name, year of birth Position(s) held with Trust Principal occupation(s) and other directorships during past 5 years</b>	<b>Trustee of the Trust since<sup>1</sup></b>	<b>Number of John Hancock funds overseen by Trustee</b>
<b>Hassell H. McClellan, Born: 1945</b> <i>Trustee and Chairperson of the Board</i> Director/Trustee, Virtus Funds (2008–2020); Director, The Barnes Group (2010–2021); Associate Professor, The Wallace E. Carroll School of Management, Boston College (retired 2013). Trustee (since 2005) and Chairperson of the Board (since 2017) of various trusts within the John Hancock Fund Complex.	<b>2012</b>	<b>183</b>
<b>James R. Boyle, Born: 1959</b> <i>Trustee</i> Foresters Financial, Chief Executive Officer (2018–2022) and board member (2017–2022). Manulife Financial and John Hancock, more than 20 years, retiring in 2012 as Chief Executive Officer, John Hancock and Senior Executive Vice President, Manulife Financial. Trustee of various trusts within the John Hancock Fund Complex (2005–2014 and since 2015).	<b>2015</b>	<b>183</b>
<b>Peter S. Burgess,<sup>2</sup> Born: 1942</b> <i>Trustee</i> Consultant (financial, accounting, and auditing matters) (since 1999); Certified Public Accountant; Partner, Arthur Andersen (independent public accounting firm) (prior to 1999); Director, Lincoln Educational Services Corporation (2004–2021); Director, Symetra Financial Corporation (2010–2016); Director, PMA Capital Corporation (2004–2010). Trustee of various trusts within the John Hancock Fund Complex (since 2005).	<b>2012</b>	<b>183</b>
<b>William H. Cunningham,<sup>2</sup> Born: 1944</b> <i>Trustee</i> Professor, University of Texas, Austin, Texas (since 1971); former Chancellor, University of Texas System and former President of the University of Texas, Austin, Texas; Director (since 2006), Lincoln National Corporation (insurance); Director, Southwest Airlines (since 2000). Trustee of various trusts within the John Hancock Fund Complex (since 1986).	<b>1986</b>	<b>183</b>
<b>Noni L. Ellison,<sup>*</sup> Born: 1971</b> <i>Trustee</i> Senior Vice President, General Counsel & Corporate Secretary, Tractor Supply Company (rural lifestyle retailer) (since 2021); General Counsel, Chief Compliance Officer & Corporate Secretary, Carestream Dental, L.L.C. (2017–2021); Associate General Counsel & Assistant Corporate Secretary, W.W. Grainger, Inc. (global industrial supplier) (2015–2017); Board Member, Goodwill of North Georgia, 2018 (FY2019)–2020 (FY2021); Board Member, Howard University School of Law Board of Visitors (since 2021); Board Member, University of Chicago Law School Board of Visitors (since 2016); Board member, Children's Healthcare of Atlanta Foundation Board (2021–present). Trustee of various trusts within the John Hancock Fund Complex (since 2022).	<b>2022</b>	<b>183</b>
<b>Grace K. Fey, Born: 1946</b> <i>Trustee</i> Chief Executive Officer, Grace Fey Advisors (since 2007); Director and Executive Vice President, Frontier Capital Management Company (1988–2007); Director, Fiduciary Trust (since 2009). Trustee of various trusts within the John Hancock Fund Complex (since 2008).	<b>2012</b>	<b>183</b>

## Independent Trustees (continued)

Name, year of birth Position(s) held with Trust Principal occupation(s) and other directorships during past 5 years	Trustee of the Trust since <sup>1</sup>	Number of John Hancock funds overseen by Trustee
<b>Dean C. Garfield,<sup>*</sup> Born: 1968</b>	<b>2022</b>	<b>183</b>
<i>Trustee</i>		
Vice President, Netflix, Inc. (since 2019); President & Chief Executive Officer, Information Technology Industry Council (2009–2019); NYU School of Law Board of Trustees (since 2021); Member, U.S. Department of Transportation, Advisory Committee on Automation (since 2021); President of the United States Trade Advisory Council (2010–2018); Board Member, College for Every Student (2017–2021); Board Member, The Seed School of Washington, D.C. (2012–2017). Trustee of various trusts within the John Hancock Fund Complex (since 2022)		
<b>Deborah C. Jackson, Born: 1952</b>	<b>2008</b>	<b>183</b>
<i>Trustee</i>		
President, Cambridge College, Cambridge, Massachusetts (since 2011); Board of Directors, Amwell Corporation (since 2020); Board of Directors, Massachusetts Women’s Forum (2018-2020); Board of Directors, National Association of Corporate Directors/New England (2015-2020); Chief Executive Officer, American Red Cross of Massachusetts Bay (2002–2011); Board of Directors of Eastern Bank Corporation (since 2001); Board of Directors of Eastern Bank Charitable Foundation (since 2001); Board of Directors of Boston Stock Exchange (2002–2008); Board of Directors of Harvard Pilgrim Healthcare (health benefits company) (2007–2011). Trustee of various trusts within the John Hancock Fund Complex (since 2008).		
<b>Patricia Lizarraga,<sup>2,*</sup> Born: 1966</b>	<b>2022</b>	<b>183</b>
<i>Trustee</i>		
Founder, Chief Executive Officer, Hypatia Capital Group (advisory and asset management company) (since 2007); Independent Director, Audit Committee Chair, and Risk Committee Member, Credicorp, Ltd. (since 2017); Independent Director, Audit Committee Chair, Banco De Credito Del Peru (since 2017); Trustee, Museum of Art of Lima (since 2009). Trustee of various trusts within the John Hancock Fund Complex (since 2022).		
<b>Steven R. Pruchansky, Born: 1944</b>	<b>1994</b>	<b>183</b>
<i>Trustee and Vice Chairperson of the Board</i>		
Managing Director, Pru Realty (since 2017); Chairman and Chief Executive Officer, Greenscapes of Southwest Florida, Inc. (2014-2020); Director and President, Greenscapes of Southwest Florida, Inc. (until 2000); Member, Board of Advisors, First American Bank (until 2010); Managing Director, Jon James, LLC (real estate) (since 2000); Partner, Right Funding, LLC (2014-2017); Director, First Signature Bank & Trust Company (until 1991); Director, Mast Realty Trust (until 1994); President, Maxwell Building Corp. (until 1991). Trustee (since 1992), Chairperson of the Board (2011–2012), and Vice Chairperson of the Board (since 2012) of various trusts within the John Hancock Fund Complex.		
<b>Frances G. Rathke,<sup>2</sup> Born: 1960</b>	<b>2020</b>	<b>183</b>
<i>Trustee</i>		
Director, Audit Committee Chair, Oatly Group AB (plant-based drink company) (since 2021); Director, Audit Committee Chair and Compensation Committee Member, Green Mountain Power Corporation (since 2016); Director, Treasurer and Finance & Audit Committee Chair, Flynn Center for Performing Arts (since 2016); Director and Audit Committee Chair, Planet Fitness (since 2016); Chief Financial Officer and Treasurer, Keurig Green Mountain, Inc. (2003-retired 2015). Trustee of various trusts within the John Hancock Fund Complex (since 2020).		

## Independent Trustees (continued)

Name, year of birth Position(s) held with Trust Principal occupation(s) and other directorships during past 5 years	Trustee of the Trust since <sup>1</sup>	Number of John Hancock funds overseen by Trustee
<b>Gregory A. Russo, Born: 1949</b>	<b>2009</b>	<b>183</b>

### *Trustee*

Director and Audit Committee Chairman (2012-2020), and Member, Audit Committee and Finance Committee (2011-2020), NCH Healthcare System, Inc. (holding company for multi-entity healthcare system); Director and Member (2012-2018), and Finance Committee Chairman (2014-2018), The Moorings, Inc. (nonprofit continuing care community); Global Vice Chairman, Risk & Regulatory Matters, KPMG LLP (KPMG) (2002–2006); Vice Chairman, Industrial Markets, KPMG (1998–2002). Trustee of various trusts within the John Hancock Fund Complex (since 2008).

## Non-Independent Trustees<sup>3</sup>

Name, year of birth Position(s) held with Trust Principal occupation(s) and other directorships during past 5 years	Trustee of the Trust since <sup>1</sup>	Number of John Hancock funds overseen by Trustee
<b>Andrew G. Arnott, Born: 1971</b>	<b>2017</b>	<b>183</b>

### *President and Non-Independent Trustee*

Global Head of Retail for Manulife (since 2022); Head of Wealth and Asset Management, United States and Europe, for John Hancock and Manulife (since 2018); Director and Executive Vice President, John Hancock Investment Management LLC (since 2005, including prior positions); Director and Executive Vice President, John Hancock Variable Trust Advisers LLC (since 2006, including prior positions); President, John Hancock Investment Management Distributors LLC (since 2004, including prior positions); President of various trusts within the John Hancock Fund Complex (since 2007, including prior positions). Trustee of various trusts within the John Hancock Fund Complex (since 2017).

<b>Marianne Harrison, Born: 1963</b>	<b>2018</b>	<b>183</b>
--------------------------------------	-------------	------------

### *Non-Independent Trustee*

President and CEO, John Hancock (since 2017); President and CEO, Manulife Canadian Division (2013–2017); Member, Board of Directors, Boston Medical Center (since 2021); Member, Board of Directors, CAE Inc. (since 2019); Member, Board of Directors, MA Competitive Partnership Board (since 2018); Member, Board of Directors, American Council of Life Insurers (ACLI) (since 2018); Member, Board of Directors, Communitech, an industry-led innovation center that fosters technology companies in Canada (2017-2019); Member, Board of Directors, Manulife Assurance Canada (2015-2017); Board Member, St. Mary's General Hospital Foundation (2014-2017); Member, Board of Directors, Manulife Bank of Canada (2013- 2017); Member, Standing Committee of the Canadian Life & Health Assurance Association (2013-2017); Member, Board of Directors, John Hancock USA, John Hancock Life & Health, John Hancock New York (2012–2013 and since 2017). Trustee of various trusts within the John Hancock Fund Complex (since 2018).

<b>Paul Lorentz, † Born: 1968</b>	<b>2022</b>	<b>183</b>
-----------------------------------	-------------	------------

### *Non-Independent Trustee*

Global Head, Manulife Wealth and Asset Management (since 2017); General Manager, Manulife, Individual Wealth Management and Insurance (2013–2017); President, Manulife Investments (2010–2016). Trustee of various trusts within the John Hancock Fund Complex (since 2022).

**Principal officers who are not Trustees**

Name, year of birth Position(s) held with Trust Principal occupation(s) during past 5 years	Current Position(s) with the Trust since
<p><b>Charles A. Rizzo, Born: 1957</b></p> <p><i>Chief Financial Officer</i></p> <p>Vice President, John Hancock Financial Services (since 2008); Senior Vice President, John Hancock Investment Management LLC and John Hancock Variable Trust Advisers LLC (since 2008); Chief Financial Officer of various trusts within the John Hancock Fund Complex (since 2007).</p>	2007
<p><b>Salvatore Schiavone, Born: 1965</b></p> <p><i>Treasurer</i></p> <p>Assistant Vice President, John Hancock Financial Services (since 2007); Vice President, John Hancock Investment Management LLC and John Hancock Variable Trust Advisers LLC (since 2007); Treasurer of various trusts within the John Hancock Fund Complex (since 2007, including prior positions).</p>	2010
<p><b>Christopher (Kit) Sechler, Born: 1973</b></p> <p><i>Secretary and Chief Legal Officer</i></p> <p>Vice President and Deputy Chief Counsel, John Hancock Investment Management (since 2015); Assistant Vice President and Senior Counsel (2009–2015), John Hancock Investment Management; Assistant Secretary of John Hancock Investment Management LLC and John Hancock Variable Trust Advisers LLC (since 2009); Chief Legal Officer and Secretary of various trusts within the John Hancock Fund Complex (since 2009, including prior positions).</p>	2018
<p><b>Trevor Swanberg, Born: 1979</b></p> <p><i>Chief Compliance Officer</i></p> <p>Chief Compliance Officer, John Hancock Investment Management LLC and John Hancock Variable Trust Advisers LLC (since 2020); Deputy Chief Compliance Officer, John Hancock Investment Management LLC and John Hancock Variable Trust Advisers LLC (2019–2020); Assistant Chief Compliance Officer, John Hancock Investment Management LLC and John Hancock Variable Trust Advisers LLC (2016–2019); Vice President, State Street Global Advisors (2015–2016); Chief Compliance Officer of various trusts within the John Hancock Fund Complex (since 2016, including prior positions).</p>	2020

The business address for all Trustees and Officers is 200 Berkeley Street, Boston, Massachusetts 02116-5023.

The Statement of Additional Information of the fund includes additional information about members of the Board of Trustees of the Trust and is available without charge, upon request, by calling 800-225-5291.

- <sup>1</sup> Each Trustee holds office until his or her successor is duly elected and qualified, or until the Trustee's death, retirement, resignation, or removal. Mr. Boyle has served as Trustee at various times prior to the date listed in the table.
- <sup>2</sup> Member of the Audit Committee.
- <sup>3</sup> The Trustee is a Non-Independent Trustee due to current or former positions with the Advisor and certain affiliates.
- <sup>\*</sup> Elected to serve as Independent Trustee effective as of September 9, 2022.
- <sup>†</sup> Elected to serve as Non-Independent Trustee effective as of September 9, 2022.

# More information

## Trustees

Hassell H. McClellan, *Chairperson*  
Steven R. Pruchansky, *Vice Chairperson*  
Andrew G. Arnott<sup>†</sup>  
James R. Boyle  
Peter S. Burgess<sup>\*</sup>  
William H. Cunningham<sup>\*</sup>  
Grace K. Fey  
Noni L. Ellison<sup>^</sup>  
Dean C. Garfield<sup>^</sup>  
Marianne Harrison<sup>‡</sup>  
Deborah C. Jackson  
Patricia Lizarraga<sup>\*,^</sup>  
Paul Lorentz<sup>‡</sup>  
Frances G. Rathke<sup>\*</sup>  
Gregory A. Russo

## Officers

Andrew G. Arnott  
*President*  
Charles A. Rizzo  
*Chief Financial Officer*  
Salvatore Schiavone  
*Treasurer*  
Christopher (Kit) Sechler  
*Secretary and Chief Legal Officer*  
Trevor Swanberg  
*Chief Compliance Officer*

<sup>†</sup> Non-Independent Trustee

<sup>\*</sup> Member of the Audit Committee

<sup>^</sup> Elected to serve as Independent Trustee effective as of September 9, 2022.

<sup>‡</sup> Elected to serve as Non-Independent Trustee effective as of September 9, 2022.

The fund's proxy voting policies and procedures, as well as the fund proxy voting record for the most recent twelve-month period ended June 30, are available free of charge on the Securities and Exchange Commission (SEC) website at [sec.gov](http://sec.gov) or on our website.

All of the fund's holdings as of the end of the third month of every fiscal quarter are filed with the SEC on Form N-PORT within 60 days of the end of the fiscal quarter. The fund's Form N-PORT filings are available on our website and the SEC's website, [sec.gov](http://sec.gov).

We make this information on your fund, as well as **monthly portfolio holdings**, and other fund details available on our website at [jhinvestments.com](http://jhinvestments.com) or by calling 800-225-5291.

You can also contact us:

**800-225-5291**  
**[jhinvestments.com](http://jhinvestments.com)**

**Regular mail:**  
John Hancock Signature Services, Inc.  
P.O. Box 219909  
Kansas City, MO 64121-9909

**Express mail:**  
John Hancock Signature Services, Inc.  
430 W 7<sup>th</sup> Street  
Suite 219909  
Kansas City, MO 64105-1407

## Investment advisor

John Hancock Investment Management LLC

## Subadvisor

Trillium Asset Management, LLC

## Portfolio Managers

Elizabeth R. Levy, CFA  
Mitali Prasad, CFA  
Cheryl I. Smith, Ph.D., CFA

## Principal distributor

John Hancock Investment Management Distributors LLC

## Custodian

Citibank, N.A.

## Transfer agent

John Hancock Signature Services, Inc.

## Legal counsel

K&L Gates LLP

## Independent registered public accounting firm

PricewaterhouseCoopers LLP

# John Hancock family of funds

## **U.S. EQUITY FUNDS**

---

Blue Chip Growth  
Classic Value  
Disciplined Value  
Disciplined Value Mid Cap  
Equity Income  
Financial Industries  
Fundamental All Cap Core  
Fundamental Large Cap Core  
Mid Cap Growth  
New Opportunities  
Regional Bank  
Small Cap Core  
Small Cap Growth  
Small Cap Value  
U.S. Global Leaders Growth  
U.S. Growth

## **INTERNATIONAL EQUITY FUNDS**

---

Disciplined Value International  
Emerging Markets  
Emerging Markets Equity  
Fundamental Global Franchise  
Global Environmental Opportunities  
Global Equity  
Global Shareholder Yield  
Global Thematic Opportunities  
International Dynamic Growth  
International Growth  
International Small Company

## **FIXED-INCOME FUNDS**

---

Bond  
California Municipal Bond  
Emerging Markets Debt  
Floating Rate Income  
Government Income  
High Yield  
High Yield Municipal Bond  
Income  
Investment Grade Bond  
Money Market  
Municipal Opportunities  
Opportunistic Fixed Income  
Short Duration Bond  
Short Duration Municipal Opportunities  
Strategic Income Opportunities

## **ALTERNATIVE FUNDS**

---

Absolute Return Currency  
Alternative Asset Allocation  
Diversified Macro  
Infrastructure  
Multi-Asset Absolute Return  
Real Estate Securities  
Seaport Long/Short

**A fund's investment objectives, risks, charges, and expenses should be considered carefully before investing. The prospectus contains this and other important information about the fund. To obtain a prospectus, contact your financial professional, call John Hancock Investment Management at 800-225-5291, or visit our website at [jhinvestments.com](http://jhinvestments.com). Please read the prospectus carefully before investing or sending money.**

## **EXCHANGE-TRADED FUNDS**

---

John Hancock Corporate Bond ETF  
John Hancock Mortgage-Backed Securities ETF  
John Hancock Multifactor Developed International ETF  
John Hancock Multifactor Emerging Markets ETF  
John Hancock Multifactor Large Cap ETF  
John Hancock Multifactor Mid Cap ETF  
John Hancock Multifactor Small Cap ETF  
John Hancock Preferred Income ETF  
John Hancock U.S. High Dividend ETF

## **ENVIRONMENTAL, SOCIAL, AND GOVERNANCE FUNDS**

---

ESG Core Bond  
ESG International Equity  
ESG Large Cap Core

## **ASSET ALLOCATION/TARGET DATE FUNDS**

---

Balanced  
Multi-Asset High Income  
Multi-Index Lifetime Portfolios  
Multi-Index Preservation Portfolios  
Multimanager Lifestyle Portfolios  
Multimanager Lifetime Portfolios

## **CLOSED-END FUNDS**

---

Asset-Based Lending  
Financial Opportunities  
Hedged Equity & Income  
Income Securities Trust  
Investors Trust  
Preferred Income  
Preferred Income II  
Preferred Income III  
Premium Dividend  
Tax-Advantaged Dividend Income  
Tax-Advantaged Global Shareholder Yield

*John Hancock ETF shares are bought and sold at market price (not NAV), and are not individually redeemed from the fund. Brokerage commissions will reduce returns.*

*John Hancock ETFs are distributed by Foreside Fund Services, LLC, and are subadvised by Manulife Investment Management (US) LLC or Dimensional Fund Advisors LP. Foreside is not affiliated with John Hancock Investment Management Distributors LLC, Manulife Investment Management (US) LLC or Dimensional Fund Advisors LP.*

*Dimensional Fund Advisors LP receives compensation from John Hancock in connection with licensing rights to the John Hancock Dimensional indexes. Dimensional Fund Advisors LP does not sponsor, endorse, or sell, and makes no representation as to the advisability of investing in, John Hancock Multifactor ETFs.*

## *A trusted* brand

John Hancock Investment Management is a premier asset manager with a heritage of financial stewardship dating back to 1862. Helping our shareholders pursue their financial goals is at the core of everything we do. It's why we support the role of professional financial advice and operate with the highest standards of conduct and integrity.

## *A better way* to invest

We serve investors globally through a unique multimanager approach: We search the world to find proven portfolio teams with specialized expertise for every strategy we offer, then we apply robust investment oversight to ensure they continue to meet our uncompromising standards and serve the best interests of our shareholders.

## *Results* for investors

Our unique approach to asset management enables us to provide a diverse set of investments backed by some of the world's best managers, along with strong risk-adjusted returns across asset classes.

"A trusted brand" is based on a survey of 6,651 respondents conducted by Medallia between 3/18/20 and 5/13/20.

 Investment Management

John Hancock Investment Management Distributors LLC, Member FINRA, SIPC  
200 Berkeley Street, Boston, MA 02116-5010, 800-225-5291,  
jhinvestments.com

Manulife Investment Management, the Stylized M Design, and Manulife Investment Management & Stylized M Design are trademarks of The Manufacturers Life Insurance Company and are used by its affiliates under license.

NOT FDIC INSURED. MAY LOSE VALUE. NO BANK GUARANTEE. NOT INSURED BY ANY GOVERNMENT AGENCY.

This report is for the information of the shareholders of John Hancock ESG Large Cap Core Fund. It is not authorized for distribution to prospective investors unless preceded or accompanied by a prospectus.

A company of  **Manulife** Investment Management