



Annual report

John Hancock Mid Cap Growth Fund

U.S. equity

March 31, 2023

A message to shareholders



Dear shareholder,

The U.S. stock market lost ground and experienced elevated volatility during the 12 months ended March 31, 2023. While economic growth remained in positive territory, the aggressive actions of the U.S. Federal Reserve (Fed) raised concerns that a recession and a concurrent slowdown in corporate earnings would occur in 2023. A variety of other events weighed on sentiment throughout the period, including the Russian invasion of Ukraine and China's extended zero-COVID policy in place until the close of 2022.

U.S. stocks advanced during the first quarter of 2023, despite the unexpected collapse of three regional banks. Although the bank news initially led to a steep market decline, stocks recovered when it became clear the industry's problems were contained, consumers were remaining resilient, and inflation was in line with expectations. The likelihood that a constrained lending environment would help slow economic growth and lead to stabilized interest rates further encouraged investors. The Fed proceeded with another increase in its target interest rate toward the end of the period.

In these uncertain times, your financial professional can assist with positioning your portfolio so that it's sufficiently diversified to help meet your long-term objectives and to withstand the inevitable bouts of market volatility along the way.

On behalf of everyone at John Hancock Investment Management, I'd like to take this opportunity to welcome new shareholders and thank existing shareholders for the continued trust you've placed in us.

Sincerely,



Andrew G. Arnott

Global Head of Retail,
Manulife Investment Management

President and CEO,
John Hancock Investment Management
Head of Wealth and Asset Management,
United States and Europe

This commentary reflects the CEO's views as of this report's period end and are subject to change at any time. Diversification does not guarantee investment returns and does not eliminate risk of loss. All investments entail risks, including the possible loss of principal. For more up-to-date information, you can visit our website at jhinvestments.com.

John Hancock

Mid Cap Growth Fund

Table of contents

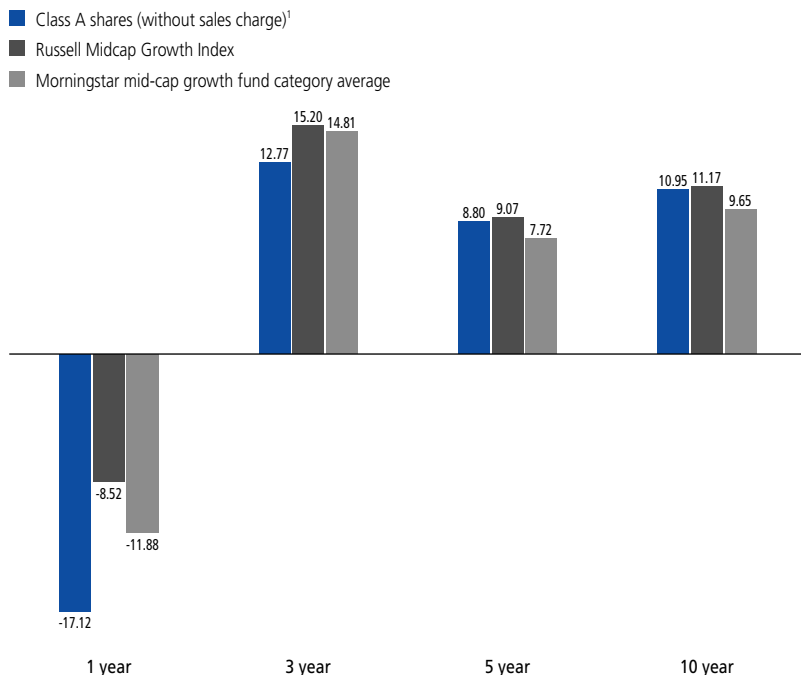
- 2** Your fund at a glance
- 4** Management's discussion of fund performance
- 6** A look at performance
- 8** Your expenses
- 10** Fund's investments
- 14** Financial statements
- 17** Financial highlights
- 22** Notes to financial statements
- 31** Report of independent registered public accounting firm
- 32** Tax information
- 33** Statement regarding liquidity risk management
- 35** Trustees and Officers
- 39** More information

Your fund at a glance

INVESTMENT OBJECTIVE

The fund seeks long-term growth and capital appreciation.

AVERAGE ANNUAL TOTAL RETURNS AS OF 3/31/2023 (%)



The Russell Midcap Growth Index tracks the performance of publicly traded mid-cap companies with higher price-to-book ratios and higher forecasted growth values.

It is not possible to invest directly in an index. Index figures do not reflect expenses or sales charges, which would result in lower returns.

The fund's Morningstar category average is a group of funds with similar investment objectives and strategies and is the equal-weighted return of all funds per category. Morningstar places funds in certain categories based on their historical portfolio holdings. Figures from Morningstar, Inc. include reinvested distributions and do not take into account sales charges. Actual load-adjusted performance is lower.

¹Effective 10-15-21, John Hancock Funds II Mid Cap Stock Fund (the Accounting Survivor) merged into the newly created John Hancock Mid Cap Growth Fund. The Mid Cap Growth Fund adopted the performance and accounting history of the Accounting Survivor. Class 1 of the Accounting Survivor commenced operations on 10-17-05. Class R6 shares of the fund were first offered on 10-18-21. Class A shares of the fund were first offered on 11-5-21. Class A returns prior to 10-18-21 are those of Class 1 shares of the Accounting Survivor and returns from 10-18-21 to Class A launch are those of Class R6 shares of the fund that have not been adjusted for class-specific expenses; otherwise, returns would vary.

The past performance shown here reflects reinvested distributions and the beneficial effect of any expense reductions, and does not guarantee future results. Performance of the other share classes will vary based on the difference in the fees and expenses of those classes. Shares will fluctuate in value and, when redeemed, may be worth more or less than their original cost. Current month-end performance may be lower or higher than the performance cited, and can be found at jhinvestments.com or by calling 800-225-5291. For further information on the fund's objectives, risks, and strategy, see the fund's prospectus.

PERFORMANCE HIGHLIGHTS OVER THE LAST TWELVE MONTHS

U.S. stock market posted negative returns

Inflation, rising interest rates, and the failure of several regional banks caused market volatility during the period.

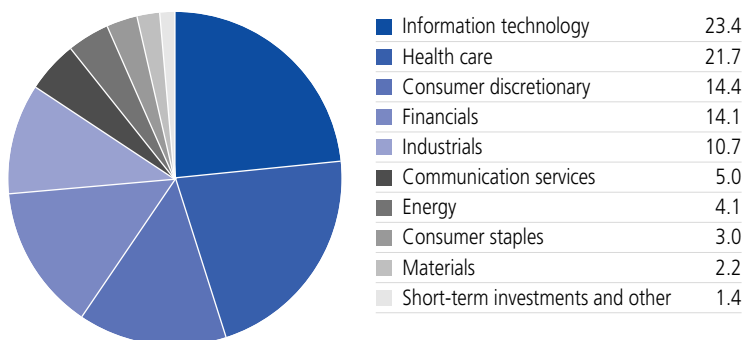
The fund posted a loss and underperformed its benchmark

The fund generated a negative return that fell short of the Russell Midcap Growth Index due largely to stock picking in the information technology, communication services, and healthcare sectors.

Underweight in information technology helped performance

An underweight in information technology and security selection in consumer discretionary aided performance.

SECTOR COMPOSITION AS OF 3/31/2023 (% of net assets)



Notes about risk

The fund is subject to various risks as described in the fund's prospectus. Political tensions and armed conflicts, including the Russian invasion of Ukraine, and any resulting economic sanctions on entities and/or individuals of a particular country could lead such a country into an economic recession. The COVID-19 disease has resulted in significant disruptions to global business activity. A widespread health crisis such as a global pandemic could cause substantial market volatility, exchange-trading suspensions, and closures, which may lead to less liquidity in certain instruments, industries, sectors, or the markets, generally, and may ultimately affect fund performance. For more information, please refer to the "Principal risks" section of the prospectus.

Management's discussion of fund performance

How did the markets perform during the 12 months ended March 31, 2023?

Equities produced negative returns for the period. While economic growth remained in positive territory, the U.S. Federal Reserve (Fed) aggressively fought rising inflation with numerous interest-rate hikes. The Fed's actions—coupled with the conflict between Russia and Ukraine, China's extended zero-COVID policy, and the failure of several banks in the United States and Europe—raised concerns that a recession and a concurrent slowdown in corporate earnings would occur.

How did the fund perform?

The fund produced a negative return that lagged its benchmark. Security selection was the main detractor from relative performance, especially in the information technology, communication services, and healthcare sectors. Picks in the consumer discretionary sector were positive. Sector selection also detracted, especially an overweight in the lagging communication services group and an underweight in the outperforming energy category. An underweight in information technology modestly contributed.

Which stocks detracted the most from the fund's relative performance?

The fund's largest detractor was RingCentral, Inc., a global enterprise cloud-computing company whose shares declined as the company reported

TOP 10 HOLDINGS

AS OF 3/31/2023 (% of net assets)

iShares Russell Mid-Cap Growth ETF	4.8
Arista Networks, Inc.	4.4
Vanguard Mid-Cap Growth ETF	3.7
Veeva Systems, Inc., Class A	3.3
DexCom, Inc.	3.1
Insulet Corp.	3.1
Workday, Inc., Class A	3.0
Agilent Technologies, Inc.	2.9
Spotify Technology SA	2.8
Paycom Software, Inc.	2.8
TOTAL	33.9

Cash and cash equivalents are not included.

weaker-than-expected revenue and lowered its financial outlook. Another relative detractor was ZoomInfo Technologies, Inc., a software and data company. Its shares fell meaningfully in November after the firm's earnings report included financial guidance that disappointed the market. Further hampering results was an out-of-benchmark position in Snap, Inc., a social media company whose shares fell during the period as the company lowered its financial guidance and announced it would look to slow hiring. A slowdown in ad spending and supply-chain constraints also weighed on Snap's shares. We sold the fund's holdings in RingCentral and Snap prior to period end.

MANAGED BY

Stephen C. Mortimer

Mario E. Abularach, CFA, CMT

**WELLINGTON
MANAGEMENT®**

Which stocks contributed to relative performance?

One notable relative contributor was Ulta Beauty, Inc., an American chain of beauty stores. The company reported strong first-quarter earnings as increased traffic and average sales prices in stores helped fuel better-than-expected sales. Another notable contributor was Insulet Corp., a medical device company. The stock of this maker of insulin pumps rose sharply in November as the company reported better-than-anticipated financial results and raised its revenue guidance for 2022. A position in computer-networking solutions company Arista Networks, Inc. also aided returns.

The views expressed in this report are exclusively those of the portfolio management team at Wellington Management Company LLP and are subject to change. They are not meant as investment advice. Please note that the holdings discussed in this report may not have been held by the fund for the entire period. Portfolio composition is subject to review in accordance with the fund's investment strategy and may vary in the future. Current and future portfolio holdings are subject to risk.

A look at performance

TOTAL RETURNS FOR THE PERIOD ENDED MARCH 31, 2023

	Average annual total returns (%) with maximum sales charge			Cumulative total returns (%) with maximum sales charge	
	1-year	5-year	10-year	5-year	10-year
Class A [†]	-21.27	7.69	10.38	44.81	168.54
Class C [†]	-18.53	8.57	10.83	50.82	179.61
Class I ^{1,2}	-16.98	8.86	10.98	52.87	183.40
Class R6 ^{1,2}	-16.81	8.90	11.00	53.19	184.01
Class NAV ^{1,2}	-16.86	8.90	11.00	53.19	184.01
Index [†]	-8.52	9.07	11.17	54.37	188.30

Performance figures assume all distributions have been reinvested. Figures reflect maximum sales charge on Class A shares of 5%, and the applicable contingent deferred sales charge (CDSC) on Class C shares. Class C shares sold within one year of purchase are subject to a 1% CDSC. Sales charges are not applicable to Class I, Class R6, and Class NAV shares.

The expense ratios of the fund, both net (including any fee waivers and/or expense limitations) and gross (excluding any fee waivers and/or expense limitations), are set forth according to the most recent publicly available prospectuses for the fund and may differ from those disclosed in the Financial highlights tables in this report. Net expenses reflect contractual fee waivers and expense limitations in effect until July 31, 2023 and are subject to change. Had the contractual fee waivers and expense limitations not been in place, gross expenses would apply. The expense ratios are as follows:

	Class A	Class C	Class I	Class R6	Class NAV
Gross (%)	1.25	2.00	1.00	0.89	0.88
Net (%)	1.17	1.92	0.92	0.81	0.80

Please refer to the most recent prospectuses and annual or semiannual report for more information on expenses and any expense limitation arrangements for each class.

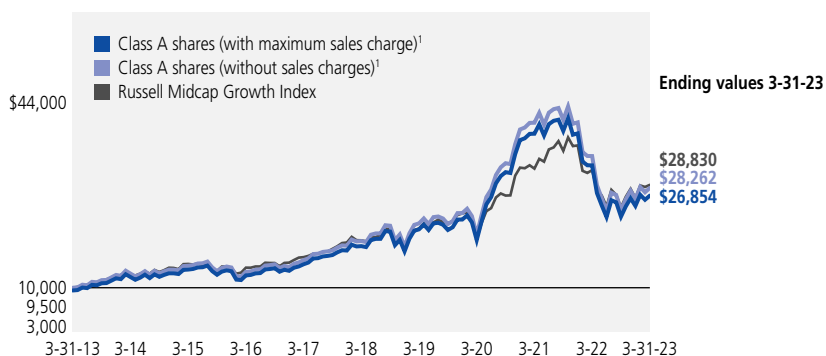
The returns reflect past results and should not be considered indicative of future performance. The return and principal value of an investment will fluctuate so that shares, when redeemed, may be worth more or less than their original cost. Due to market volatility and other factors, the fund's current performance may be higher or lower than the performance shown. For current to the most recent month-end performance data, please call 800-225-5291 or visit the fund's website at jhinvestments.com.

The performance table above and the chart on the next page do not reflect the deduction of taxes that a shareholder would pay on fund distributions or the redemption of fund shares. The fund's performance results reflect any applicable fee waivers or expense reductions, without which the expenses would increase and results would have been less favorable.

[†] Index is the Russell Midcap Growth Index.

See the following page for footnotes.

This chart and table show what happened to a hypothetical \$10,000 investment in John Hancock Mid Cap Growth Fund for the share classes and periods indicated, assuming all distributions were reinvested. For comparison, we've shown the same investment in the Russell Midcap Growth Index.



	Start date	With maximum sales charge (\$)	Without sales charge (\$)	Index (\$)
Class C ^{1,3}	3-31-13	27,961	27,961	28,830
Class I ^{1,2}	3-31-13	28,340	28,340	28,830
Class R6 ^{1,2}	3-31-13	28,401	28,401	28,830
Class NAV ^{1,2}	3-31-13	28,401	28,401	28,830

The Russell Midcap Growth Index tracks the performance of publicly traded mid-cap companies with higher price-to-book ratios and higher forecasted growth values.

It is not possible to invest directly in an index. Index figures do not reflect expenses or sales charges, which would result in lower returns.

Footnotes related to performance pages

¹ Effective 10-15-21, John Hancock Funds II Mid Cap Stock Fund (the Accounting Survivor) merged into the newly created John Hancock Mid Cap Growth Fund. The Mid Cap Growth Fund adopted the performance and accounting history of the Accounting Survivor. Class 1 of the Accounting Survivor commenced operations on 10-17-05. Class NAV and Class R6 shares of the fund were first offered on 10-18-21. Class A, Class C, and Class I shares of the fund were first offered on 11-5-21. Class A, Class C, and Class I returns prior to 10-18-21 are those of Class 1 shares of the Accounting Survivor and returns from 10-18-21 to launch are those of Class R6 shares of the fund that have not been adjusted for class-specific expenses; otherwise, returns would vary.

² For certain types of investors, as described in the fund's prospectuses.

³ The contingent deferred sales charge is not applicable.

Your expenses

These examples are intended to help you understand your ongoing operating expenses of investing in the fund so you can compare these costs with the ongoing costs of investing in other mutual funds.

Understanding fund expenses

As a shareholder of the fund, you incur two types of costs:

- **Transaction costs**, which include sales charges (loads) on purchases or redemptions (varies by share class), minimum account fee charge, etc.
- **Ongoing operating expenses**, including management fees, distribution and service fees (if applicable), and other fund expenses.

We are presenting only your ongoing operating expenses here.

Actual expenses/actual returns

The first line of each share class in the table on the following page is intended to provide information about the fund's actual ongoing operating expenses, and is based on the fund's actual return. It assumes an account value of \$1,000.00 on October 1, 2022, with the same investment held until March 31, 2023.

Together with the value of your account, you may use this information to estimate the operating expenses that you paid over the period. Simply divide your account value at March 31, 2023, by \$1,000.00, then multiply it by the "expenses paid" for your share class from the table. For example, for an account value of \$8,600.00, the operating expenses should be calculated as follows:

Example

$$\left[\frac{\text{My account value}}{\$8,600.00} / \$1,000.00 = 8.6 \right] \times \$ \left[\begin{array}{c} \text{"expenses paid"} \\ \text{from table} \end{array} \right] = \text{My actual expenses}$$

Hypothetical example for comparison purposes

The second line of each share class in the table on the following page allows you to compare the fund's ongoing operating expenses with those of any other fund. It provides an example of the fund's hypothetical account values and hypothetical expenses based on each class's actual expense ratio and an assumed 5% annualized return before expenses (which is not the class's actual return). It assumes an account value of \$1,000.00 on October 1, 2022, with the same investment held until March 31, 2023. Look in any other fund shareholder report to find its hypothetical example and you will be able to compare these expenses. Please remember that these hypothetical account values and expenses may not be used to estimate the actual ending account balance or expenses you paid for the period.

Remember, these examples do not include any transaction costs, therefore, these examples will not help you to determine the relative total costs of owning different funds. If transaction costs were included, your expenses would have been higher. See the prospectuses for details regarding transaction costs.

SHAREHOLDER EXPENSE EXAMPLE CHART

		Account value on 10-1-2022	Ending value on 3-31-2023	Expenses paid during period ended 3-31-2023 ¹	Annualized expense ratio
Class A	Actual expenses/actual returns	\$1,000.00	\$1,166.80	\$ 6.43	1.19%
	Hypothetical example	1,000.00	1,019.00	5.99	1.19%
Class C	Actual expenses/actual returns	1,000.00	1,162.00	10.46	1.94%
	Hypothetical example	1,000.00	1,015.30	9.75	1.94%
Class I	Actual expenses/actual returns	1,000.00	1,167.20	5.08	0.94%
	Hypothetical example	1,000.00	1,020.20	4.73	0.94%
Class R6	Actual expenses/actual returns	1,000.00	1,168.80	4.49	0.83%
	Hypothetical example	1,000.00	1,020.80	4.18	0.83%
Class NAV	Actual expenses/actual returns	1,000.00	1,168.80	4.43	0.82%
	Hypothetical example	1,000.00	1,020.80	4.13	0.82%

¹ Expenses are equal to the annualized expense ratio, multiplied by the average account value over the period, multiplied by 182/365 (to reflect the one-half year period).

Fund's investments

AS OF 3-31-23

	Shares	Value
Common stocks 89.6%		\$1,246,684,668
(Cost \$1,158,641,391)		
Communication services 5.0%		69,283,723
Entertainment 3.9%		
Live Nation Entertainment, Inc. (A)	215,468	15,082,760
Spotify Technology SA (A)	292,552	39,090,798
Interactive media and services 1.1%		
ZoomInfo Technologies, Inc. (A)	611,500	15,110,165
Consumer discretionary 14.4%		201,009,174
Automobile components 0.8%		
Mobileye Global, Inc., Class A (A)(B)	250,920	10,857,308
Broadline retail 1.4%		
Etsy, Inc. (A)	171,463	19,088,976
Hotels, restaurants and leisure 5.7%		
Aramark	397,961	14,247,004
Chipotle Mexican Grill, Inc. (A)	10,764	18,388,034
DraftKings, Inc., Class A (A)	1,200,287	23,237,556
Las Vegas Sands Corp. (A)	422,965	24,299,339
Household durables 1.0%		
Lennar Corp., A Shares	139,863	14,701,000
Specialty retail 3.3%		
Ross Stores, Inc.	200,047	21,230,988
Ulta Beauty, Inc. (A)	45,237	24,684,474
Textiles, apparel and luxury goods 2.2%		
Deckers Outdoor Corp. (A)	67,344	30,274,495
Consumer staples 3.0%		41,596,682
Beverages 1.5%		
Celsius Holdings, Inc. (A)	222,216	20,652,755
Food products 1.5%		
Lamb Weston Holdings, Inc.	200,382	20,943,927
Energy 4.1%		57,327,947
Oil, gas and consumable fuels 4.1%		
Cheniere Energy, Inc.	97,292	15,333,219
Diamondback Energy, Inc.	103,539	13,995,367
Pioneer Natural Resources Company	61,362	12,532,575
Targa Resources Corp.	212,019	15,466,786
Financials 5.6%		78,146,375
Capital markets 3.9%		
Ares Management Corp., Class A	254,577	21,241,905

	Shares	Value
Financials (continued)		
Capital markets (continued)		
Tradeweb Markets, Inc., Class A	412,430	\$32,590,219
Financial services 1.7%		
Block, Inc. (A)	354,177	24,314,251
Health care 21.7%		301,968,351
Biotechnology 3.0%		
Exact Sciences Corp. (A)	445,277	30,194,233
United Therapeutics Corp. (A)	50,978	11,417,033
Health care equipment and supplies 10.3%		
DexCom, Inc. (A)	375,558	43,632,328
Hologic, Inc. (A)	168,158	13,570,351
Inspire Medical Systems, Inc. (A)	96,879	22,676,468
Insulet Corp. (A)	132,550	42,278,148
Shockwave Medical, Inc. (A)	96,371	20,896,124
Health care technology 3.3%		
Veeva Systems, Inc., Class A (A)	250,421	46,024,876
Life sciences tools and services 4.2%		
Agilent Technologies, Inc.	287,386	39,756,979
Medpace Holdings, Inc. (A)	98,555	18,533,268
Pharmaceuticals 0.9%		
Jazz Pharmaceuticals PLC (A)	88,762	12,988,543
Industrials 10.7%		148,195,988
Aerospace and defense 0.7%		
Curtiss-Wright Corp.	51,494	9,076,332
Building products 2.8%		
Builders FirstSource, Inc. (A)	159,346	14,146,738
Johnson Controls International PLC	416,245	25,066,274
Construction and engineering 2.2%		
Fluor Corp. (A)	548,426	16,951,848
MasTec, Inc. (A)	146,901	13,873,330
Machinery 0.9%		
The Toro Company	116,447	12,944,249
Professional services 2.7%		
CoStar Group, Inc. (A)	286,380	19,717,263
EXL Service Holdings, Inc. (A)	105,440	17,063,355
Trading companies and distributors 1.4%		
WESCO International, Inc.	125,253	19,356,599
Information technology 22.9%		319,009,888
Communications equipment 4.4%		
Arista Networks, Inc. (A)	362,471	60,844,379

	Shares	Value
Information technology (continued)		
Electronic equipment, instruments and components 1.9%		
Flex, Ltd. (A)	1,159,921	\$26,689,782
IT services 2.9%		
Gartner, Inc. (A)	38,948	12,688,090
Okta, Inc. (A)	332,311	28,658,501
Semiconductors and semiconductor equipment 5.7%		
First Solar, Inc. (A)	81,111	17,641,643
MKS Instruments, Inc.	149,113	13,214,394
SolarEdge Technologies, Inc. (A)	92,668	28,166,439
Universal Display Corp.	128,454	19,927,069
Software 8.0%		
DocuSign, Inc. (A)	527,591	30,758,555
Paycom Software, Inc. (A)	127,051	38,624,775
Workday, Inc., Class A (A)	202,364	41,796,261
Materials 2.2%		30,146,540
Chemicals 2.2%		
Albemarle Corp.	136,385	30,146,540
Preferred securities 0.5%		\$6,476,070
(Cost \$9,360,258)		
Information technology 0.5%		6,476,070
Software 0.5%		
Essence Group Holdings Corp. (A)(C)(D)	2,958,957	3,373,211
Lookout, Inc., Series F (A)(C)(D)	392,767	3,102,859
Exchange-traded funds 8.5%		\$117,839,346
(Cost \$114,390,787)		
iShares Russell Mid-Cap Growth ETF (B)	737,415	67,141,636
Vanguard Mid-Cap Growth ETF (B)	260,135	50,697,710
	Yield (%)	Value
Short-term investments 6.2%		\$86,044,222
(Cost \$86,042,876)		
Short-term funds 6.2%		86,044,222
John Hancock Collateral Trust (E)	4.9438(F)	44,683,221
State Street Institutional U.S. Government Money Market Fund, Premier Class	4.6799(F)	41,361,001
Total investments (Cost \$1,368,435,312) 104.8%		\$1,457,044,306
Other assets and liabilities, net (4.8%)		(66,437,784)
Total net assets 100.0%		\$1,390,606,522

The percentage shown for each investment category is the total value of the category as a percentage of the net assets of the fund.

Security Abbreviations and Legend

- (A) Non-income producing security.
- (B) All or a portion of this security is on loan as of 3-31-23.
- (C) Restricted security as to resale. For more information on this security refer to the Notes to financial statements.
- (D) Security is valued using significant unobservable inputs and is classified as Level 3 in the fair value hierarchy. Refer to Note 2 to the financial statements.
- (E) Investment is an affiliate of the fund, the advisor and/or subadvisor. This security represents the investment of cash collateral received for securities lending.
- (F) The rate shown is the annualized seven-day yield as of 3-31-23.

At 3-31-23, the aggregate cost of investments for federal income tax purposes was \$1,375,110,676. Net unrealized appreciation aggregated to \$81,933,630, of which \$189,844,281 related to gross unrealized appreciation and \$107,910,651 related to gross unrealized depreciation.

Financial statements

STATEMENT OF ASSETS AND LIABILITIES 3-31-23

Assets	
Unaffiliated investments, at value (Cost \$1,323,753,437) including \$43,797,932 of securities loaned	\$1,412,361,085
Affiliated investments, at value (Cost \$44,681,875)	44,683,221
Total investments, at value (Cost \$1,368,435,312)	1,457,044,306
Cash	550,080
Dividends and interest receivable	310,956
Receivable for fund shares sold	241,939
Receivable for securities lending income	31,997
Other assets	190,341
Total assets	1,458,369,619
Liabilities	
Payable for investments purchased	22,376,057
Payable for fund shares repurchased	510,049
Payable upon return of securities loaned	44,700,725
Payable to affiliates	
Accounting and legal services fees	57,359
Transfer agent fees	4,090
Trustees' fees	95
Other liabilities and accrued expenses	114,722
Total liabilities	67,763,097
Net assets	\$1,390,606,522
Net assets consist of	
Paid-in capital	\$1,617,853,262
Total distributable earnings (loss)	(227,246,740)
Net assets	\$1,390,606,522
Net asset value per share	
Based on net asset value and shares outstanding - the fund has an unlimited number of shares authorized with no par value	
Class A (\$18,650,636 ÷ 1,401,734 shares) ¹	\$13.31
Class C (\$116,349 ÷ 8,841 shares) ¹	\$13.16
Class I (\$4,203,410 ÷ 314,744 shares)	\$13.36
Class R6 (\$298,511,177 ÷ 22,313,095 shares)	\$13.38
Class NAV (\$1,069,124,950 ÷ 79,914,050 shares)	\$13.38
Maximum offering price per share	
Class A (net asset value per share ÷ 95%) ²	\$14.01

¹ Redemption price per share is equal to net asset value less any applicable contingent deferred sales charge.

² On single retail sales of less than \$50,000. On sales of \$50,000 or more and on group sales the offering price is reduced.

STATEMENT OF OPERATIONS For the year ended 3-31-23

Investment income	
Dividends	\$7,158,503
Interest	657,228
Securities lending	142,886
Total investment income	7,958,617
Expenses	
Investment management fees	11,541,564
Distribution and service fees	23,748
Accounting and legal services fees	268,537
Transfer agent fees	43,455
Trustees' fees	30,292
Custodian fees	153,902
State registration fees	137,295
Printing and postage	19,342
Professional fees	134,663
Other	93,301
Total expenses	12,446,099
Less expense reductions	(1,071,073)
Net expenses	11,375,026
Net investment loss	(3,416,409)
Realized and unrealized gain (loss)	
Net realized gain (loss) on	
Unaffiliated investments	(303,303,532)
Affiliated investments	(13,763)
	(303,317,295)
Change in net unrealized appreciation (depreciation) of	
Unaffiliated investments and translation of assets and liabilities in foreign currencies	29,546,917
Affiliated investments	(870)
	29,546,047
Net realized and unrealized loss	(273,771,248)
Decrease in net assets from operations	\$(277,187,657)

STATEMENTS OF CHANGES IN NET ASSETS

	Year ended 3-31-23	Period ended 3-31-22 ¹	Year ended 8-31-21
Increase (decrease) in net assets			
From operations			
Net investment loss	\$(3,416,409)	\$(7,164,970)	\$(13,702,968)
Net realized gain (loss)	(303,317,295)	132,478,948	636,192,881
Change in net unrealized appreciation (depreciation)	29,546,047	(548,264,558)	(40,616,405)
Increase (decrease) in net assets resulting from operations	(277,187,657)	(422,950,580)	581,873,508
Distributions to shareholders			
From earnings			
Class A ²	(838,676)	—	—
Class C ²	(7,763)	—	—
Class I ²	(240,504)	—	—
Class R6 ³	(20,042,927)	(141,941,775)	—
Class 1	—	—	(149,685,105)
Class NAV	(71,562,747)	(380,500,343)	(307,295,923)
Total distributions	(92,692,617)	(522,442,118)	(456,981,028)
From fund share transactions	63,893,824	496,465,026	179,671,998
Total increase (decrease)	(305,986,450)	(448,927,672)	304,564,478
Net assets			
Beginning of year	1,696,592,972	2,145,520,644	1,840,956,166
End of year	\$1,390,606,522	\$1,696,592,972	\$2,145,520,644

¹ For the seven-month period ended 3-31-22. John Hancock Funds II Mid Cap Stock Fund's (the "Accounting Survivor") fiscal year end was August 31 and the fund's fiscal year end is March 31.

² The inception date for Class A, Class C and Class I shares is 11-5-21.

³ The inception date for Class R6 shares is 10-18-21.

Financial highlights

CLASS A SHARES Period ended	3-31-23	3-31-22 ¹
Per share operating performance		
Net asset value, beginning of period	\$17.26	\$22.29
Net investment loss ²	(0.07)	(0.07)
Net realized and unrealized gain (loss) on investments	(2.96)	(4.96)
Total from investment operations	(3.03)	(5.03)
Less distributions		
From net realized gain	(0.92)	—
Total distributions	(0.92)	—
Net asset value, end of period	\$13.31	\$17.26
Total return (%)^{3,4}	(17.12)	(22.57)⁵
Ratios and supplemental data		
Net assets, end of period (in millions)	\$19	\$5
Ratios (as a percentage of average net assets):		
Expenses before reductions	1.26	1.24 ⁶
Expenses including reductions	1.18	1.17 ⁶
Net investment loss	(0.53)	(0.98) ⁶
Portfolio turnover (%)	102	69 ⁷

¹ The inception date for Class A shares is 11-5-21.

² Based on average daily shares outstanding.

³ Total returns would have been lower had certain expenses not been reduced during the applicable periods.

⁴ Does not reflect the effect of sales charges, if any.

⁵ Not annualized.

⁶ Annualized. Certain expenses are presented unannualized.

⁷ Portfolio turnover is shown for the period from 9-1-21 to 3-31-22.

CLASS C SHARES Period ended	3-31-23	3-31-22 ¹
Per share operating performance		
Net asset value, beginning of period	\$17.21	\$22.29
Net investment loss ²	(0.17)	(0.13)
Net realized and unrealized gain (loss) on investments	(2.96)	(4.95)
Total from investment operations	(3.13)	(5.08)
Less distributions		
From net realized gain	(0.92)	—
Total distributions	(0.92)	—
Net asset value, end of period	\$13.16	\$17.21
Total return (%)^{3,4}	(17.76)	(22.79)⁵
Ratios and supplemental data		
Net assets, end of period (in millions)	\$— ⁶	\$— ⁶
Ratios (as a percentage of average net assets):		
Expenses before reductions	2.01	1.98 ⁷
Expenses including reductions	1.93	1.92 ⁷
Net investment loss	(1.28)	(1.77) ⁷
Portfolio turnover (%)	102	69 ⁸

¹ The inception date for Class C shares is 11-5-21.

² Based on average daily shares outstanding.

³ Total returns would have been lower had certain expenses not been reduced during the applicable periods.

⁴ Does not reflect the effect of sales charges, if any.

⁵ Not annualized.

⁶ Less than \$500,000.

⁷ Annualized. Certain expenses are presented unannualized.

⁸ Portfolio turnover is shown for the period from 9-1-21 to 3-31-22.

CLASS I SHARES Period ended	3-31-23	3-31-22¹
Per share operating performance		
Net asset value, beginning of period	\$17.28	\$22.29
Net investment loss ²	(0.05)	(0.05)
Net realized and unrealized gain (loss) on investments	(2.95)	(4.96)
Total from investment operations	(3.00)	(5.01)
Less distributions		
From net realized gain	(0.92)	—
Total distributions	(0.92)	—
Net asset value, end of period	\$13.36	\$17.28
Total return (%)³	(16.98)	(22.48)⁴
Ratios and supplemental data		
Net assets, end of period (in millions)	\$4	\$4
Ratios (as a percentage of average net assets):		
Expenses before reductions	1.01	0.99 ⁵
Expenses including reductions	0.93	0.92 ⁵
Net investment loss	(0.35)	(0.80) ⁵
Portfolio turnover (%)	102	69 ⁶

¹ The inception date for Class I shares is 11-5-21.

² Based on average daily shares outstanding.

³ Total returns would have been lower had certain expenses not been reduced during the applicable periods.

⁴ Not annualized.

⁵ Annualized. Certain expenses are presented unannualized.

⁶ Portfolio turnover is shown for the period from 9-1-21 to 3-31-22.

CLASS R6 SHARES Period ended	3-31-23	3-31-22^{1,2}	8-31-21²	8-31-20²	8-31-19²	8-31-18²
Per share operating performance						
Net asset value, beginning of period	\$17.29	\$28.81	\$27.74	\$22.24	\$25.90	\$22.14
Net investment loss ³	(0.03)	(0.08)	(0.20)	(0.11)	(0.12)	(0.10)
Net realized and unrealized gain (loss) on investments	(2.96)	(4.17)	8.88	8.38	0.28	6.01
Total from investment operations	(2.99)	(4.25)	8.68	8.27	0.16	5.91
Less distributions						
From net realized gain	(0.92)	(7.27)	(7.61)	(2.77)	(3.82)	(2.15)
Total distributions	(0.92)	(7.27)	(7.61)	(2.77)	(3.82)	(2.15)
Net asset value, end of period	\$13.38	\$17.29	\$28.81	\$27.74	\$22.24	\$25.90
Total return (%)⁴	(16.81)	(20.41)⁵	33.87	41.40	5.71	28.68
Ratios and supplemental data						
Net assets, end of period (in millions)	\$299	\$399	\$631	\$547	\$438	\$447
Ratios (as a percentage of average net assets):						
Expenses before reductions	0.90	0.88 ⁶	0.92	0.92	0.92	0.92
Expenses including reductions	0.83	0.82 ⁶	0.91	0.92	0.92	0.91
Net investment loss	(0.26)	(0.65) ⁶	(0.72)	(0.51)	(0.54)	(0.44)
Portfolio turnover (%)	102	69	91	86	61 ⁷	67

¹ For the seven-month period ended 3-31-22. The inception date for Class R6 shares is 10-18-21. The Accounting Survivor's fiscal year end was August 31 and the fund's fiscal year end is March 31.

² Financial highlights presented prior to close of business on October 15, 2021 represents the historical operating results of the Accounting Survivor. At the close of business on October 15, 2021, the Accounting Survivor was reorganized into the fund. On the date of reorganization, the accounting and performance history of the Accounting Survivor was retained as that of the fund. Refer to Note 11 for further details.

³ Based on average daily shares outstanding.

⁴ Total returns would have been lower had certain expenses not been reduced during the applicable periods.

⁵ Not annualized.

⁶ Annualized. Certain expenses are presented unannualized.

⁷ Excludes merger activity.

CLASS NAV SHARES Period ended	3-31-23	3-31-22^{1,2}	8-31-21²	8-31-20²	8-31-19²	8-31-18²
Per share operating performance						
Net asset value, beginning of period	\$17.29	\$28.81	\$27.61	\$22.09	\$25.66	\$21.90
Net investment loss ³	(0.03)	(0.08)	(0.19)	(0.10)	(0.11)	(0.09)
Net realized and unrealized gain (loss) on investments	(2.96)	(4.17)	8.86	8.34	0.29	5.95
Total from investment operations	(2.99)	(4.25)	8.67	8.24	0.18	5.86
Less distributions						
From net realized gain	(0.92)	(7.27)	(7.47)	(2.72)	(3.75)	(2.10)
Total distributions	(0.92)	(7.27)	(7.47)	(2.72)	(3.75)	(2.10)
Net asset value, end of period	\$13.38	\$17.29	\$28.81	\$27.61	\$22.09	\$25.66
Total return (%)⁴	(16.86)	(20.37)⁵	33.91	41.47	5.74	28.75
Ratios and supplemental data						
Net assets, end of period (in millions)	\$1,069	\$1,289	\$1,515	\$1,294	\$1,153	\$1,258
Ratios (as a percentage of average net assets):						
Expenses before reductions	0.89	0.87 ⁶	0.87	0.87	0.87	0.87
Expenses including reductions	0.82	0.81 ⁶	0.86	0.87	0.87	0.86
Net investment loss	(0.24)	(0.65) ⁶	(0.67)	(0.46)	(0.49)	(0.39)
Portfolio turnover (%)	102	69	91	86	61 ⁷	67

¹ For the seven-month period ended 3-31-22. The Accounting Survivor's fiscal year end was August 31 and the fund's fiscal year end is March 31.

² Financial highlights presented prior to close of business on October 15, 2021 represents the historical operating results of the Accounting Survivor. At the close of business on October 15, 2021, the Accounting Survivor was reorganized into the fund. On the date of reorganization, the accounting and performance history of the Accounting Survivor was retained as that of the fund. As a result, the per share operating performance has been adjusted for the prior periods presented to reflect the transaction. The conversion ratio used was 0.98073, as the Accounting Survivor's net asset value was \$28.7711 while the fund's net asset value was \$28.2165 on the date of reorganization. Refer to Note 11 for further details.

³ Based on average daily shares outstanding.

⁴ Total returns would have been lower had certain expenses not been reduced during the applicable periods.

⁵ Not annualized.

⁶ Annualized. Certain expenses are presented unannualized.

⁷ Excludes merger activity.

Notes to financial statements

Note 1 — Organization

John Hancock Mid Cap Growth Fund (the fund) is a series of John Hancock Investment Trust (the Trust), an open-end management investment company organized as a Massachusetts business trust and registered under the Investment Company Act of 1940, as amended (the 1940 Act). The investment objective of the fund is to seek long-term growth and capital appreciation.

The fund may offer multiple classes of shares. The shares currently outstanding are detailed in the Statement of assets and liabilities. Class A and Class C shares are offered to all investors. Class I shares are offered to institutions and certain investors. Class R6 shares are only available to certain retirement plans, institutions and other investors. Class NAV shares are offered to John Hancock affiliated funds of funds, retirement plans for employees of John Hancock and/or Manulife Financial Corporation, and certain 529 plans. Class C shares convert to Class A shares eight years after purchase (certain exclusions may apply). Shareholders of each class have exclusive voting rights to matters that affect that class. The distribution and service fees, if any, and transfer agent fees for each class may differ.

Note 2 — Significant accounting policies

The financial statements have been prepared in conformity with accounting principles generally accepted in the United States of America (US GAAP), which require management to make certain estimates and assumptions as of the date of the financial statements. Actual results could differ from those estimates and those differences could be significant. The fund qualifies as an investment company under Topic 946 of Accounting Standards Codification of US GAAP.

Events or transactions occurring after the end of the fiscal period through the date that the financial statements were issued have been evaluated in the preparation of the financial statements. The following summarizes the significant accounting policies of the fund:

Security valuation. Investments are stated at value as of the scheduled close of regular trading on the New York Stock Exchange (NYSE), normally at 4:00 P.M., Eastern Time. In case of emergency or other disruption resulting in the NYSE not opening for trading or the NYSE closing at a time other than the regularly scheduled close, the net asset value (NAV) may be determined as of the regularly scheduled close of the NYSE pursuant to the Advisor's Valuation Policies and Procedures.

In order to value the securities, the fund uses the following valuation techniques: Equity securities, including exchange-traded or closed-end funds, are typically valued at the last sale price or official closing price on the exchange or principal market where the security trades. In the event there were no sales during the day or closing prices are not available, the securities are valued using the last available bid price. Investments by the fund in open-end mutual funds, including John Hancock Collateral Trust (JHCT), are valued at their respective NAVs each business day.

In certain instances, the Pricing Committee of the Advisor may determine to value equity securities using prices obtained from another exchange or market if trading on the exchange or market on which prices are typically obtained did not open for trading as scheduled, or if trading closed earlier than scheduled, and trading occurred as normal on another exchange or market.

Other portfolio securities and assets, for which reliable market quotations are not readily available, are valued at fair value as determined in good faith by the Pricing Committee following procedures established by the Advisor and adopted by the Board of Trustees. The frequency with which these fair valuation procedures are used cannot be predicted and fair value of securities may differ significantly from the value that would have been used had a ready market for such securities existed.

The fund uses a three tier hierarchy to prioritize the pricing assumptions, referred to as inputs, used in valuation techniques to measure fair value. Level 1 includes securities valued using quoted prices in active markets for identical securities, including registered investment companies. Level 2 includes securities valued using other

significant observable inputs. Observable inputs may include quoted prices for similar securities, interest rates, prepayment speeds and credit risk. Prices for securities valued using these inputs are received from independent pricing vendors and brokers and are based on an evaluation of the inputs described. Level 3 includes securities valued using significant unobservable inputs when market prices are not readily available or reliable, including the Advisor’s assumptions in determining the fair value of investments. Factors used in determining value may include market or issuer specific events or trends, changes in interest rates and credit quality. The inputs or methodology used for valuing securities are not necessarily an indication of the risks associated with investing in those securities. Changes in valuation techniques and related inputs may result in transfers into or out of an assigned level within the disclosure hierarchy.

The following is a summary of the values by input classification of the fund’s investments as of March 31, 2023, by major security category or type:

	Total value at 3-31-23	Level 1 quoted price	Level 2 significant observable inputs	Level 3 significant unobservable inputs
Investments in securities:				
Assets				
Common stocks	\$1,246,684,668	\$1,246,684,668	—	—
Preferred securities	6,476,070	—	—	\$6,476,070
Exchange-traded funds	117,839,346	117,839,346	—	—
Short-term investments	86,044,222	86,044,222	—	—
Total investments in securities	\$1,457,044,306	\$1,450,568,236	—	\$6,476,070

Real estate investment trusts. The fund may invest in real estate investment trusts (REITs). Distributions from REITs may be recorded as income and subsequently characterized by the REIT at the end of their fiscal year as a reduction of cost of investments and/or as a realized gain. As a result, the fund will estimate the components of distributions from these securities. Such estimates are revised when the actual components of the distributions are known.

Security transactions and related investment income. Investment security transactions are accounted for on a trade date plus one basis for daily NAV calculations. However, for financial reporting purposes, investment transactions are reported on trade date. Interest income is accrued as earned. Dividend income is recorded on ex-date, except for dividends of certain foreign securities where the dividend may not be known until after the ex-date. In those cases, dividend income, net of withholding taxes, is recorded when the fund becomes aware of the dividends. Non-cash dividends, if any, are recorded at the fair market value of the securities received. Gains and losses on securities sold are determined on the basis of identified cost and may include proceeds from litigation.

Securities lending. The fund may lend its securities to earn additional income. The fund receives collateral from the borrower in an amount not less than the market value of the loaned securities. The fund may invest its cash collateral in JHCT, an affiliate of the fund, which has a floating NAV and is registered with the Securities and Exchange Commission (SEC) as an investment company. JHCT is a prime money market fund and invests in short-term money market investments. The fund will receive the benefit of any gains and bear any losses generated by JHCT with respect to the cash collateral.

The fund has the right to recall loaned securities on demand. If a borrower fails to return loaned securities when due, then the lending agent is responsible and indemnifies the fund for the lent securities. The lending agent uses the collateral received from the borrower to purchase replacement securities of the same issue, type, class and series of the loaned securities. If the value of the collateral is less than the purchase cost of replacement securities, the lending agent is responsible for satisfying the shortfall but only to the extent that the shortfall is not due to

any decrease in the value of JHCT.

Although the risk of loss on securities lent is mitigated by receiving collateral from the borrower and through lending agent indemnification, the fund could experience a delay in recovering securities or could experience a lower than expected return if the borrower fails to return the securities on a timely basis. During the existence of the loan, the fund will receive from the borrower amounts equivalent to any dividends, interest or other distributions on the loaned securities, as well as interest on such amounts. The fund receives compensation for lending its securities by retaining a portion of the return on the investment of the collateral and compensation from fees earned from borrowers of the securities. Securities lending income received by the fund is net of fees retained by the securities lending agent. Net income received from JHCT is a component of securities lending income as recorded on the Statement of operations.

Obligations to repay collateral received by the fund are shown on the Statement of assets and liabilities as Payable upon return of securities loaned and are secured by the loaned securities. As of March 31, 2023, the fund loaned securities valued at \$43,797,932 and received \$44,700,725 of cash collateral.

Overdraft. The fund may have the ability to borrow from banks for temporary or emergency purposes, including meeting redemption requests that otherwise might require the untimely sale of securities. Pursuant to the fund's custodian agreement, the custodian may loan money to the fund to make properly authorized payments. The fund is obligated to repay the custodian for any overdraft, including any related costs or expenses. The custodian may have a lien, security interest or security entitlement in any fund property that is not otherwise segregated or pledged, to the extent of any overdraft, and to the maximum extent permitted by law.

Line of credit. The fund and other affiliated funds have entered into a syndicated line of credit agreement with Citibank, N.A. as the administrative agent that enables them to participate in a \$1 billion unsecured committed line of credit. Excluding commitments designated for a certain fund and subject to the needs of all other affiliated funds, the fund can borrow up to an aggregate commitment amount of \$750 million, subject to asset coverage and other limitations as specified in the agreement. A commitment fee payable at the end of each calendar quarter, based on the average daily unused portion of the line of credit, is charged to each participating fund based on a combination of fixed and asset-based allocations and is reflected in Other expenses on the Statement of operations. For the year ended March 31, 2023, the fund had no borrowings under the line of credit. Commitment fees for the year ended March 31, 2023 were \$5,324.

Expenses. Within the John Hancock group of funds complex, expenses that are directly attributable to an individual fund are allocated to such fund. Expenses that are not readily attributable to a specific fund are allocated among all funds in an equitable manner, taking into consideration, among other things, the nature and type of expense and the fund's relative net assets. Expense estimates are accrued in the period to which they relate and adjustments are made when actual amounts are known.

Class allocations. Income, common expenses and realized and unrealized gains (losses) are determined at the fund level and allocated daily to each class of shares based on the net assets of the class. Class-specific expenses, such as distribution and service fees, if any, and transfer agent fees, for all classes, are charged daily at the class level based on the net assets of each class and the specific expense rates applicable to each class.

Federal income taxes. The fund intends to continue to qualify as a regulated investment company by complying with the applicable provisions of the Internal Revenue Code and will not be subject to federal income tax on taxable income that is distributed to shareholders. Therefore, no federal income tax provision is required.

For federal income tax purposes, as of March 31, 2023, the fund has a short-term capital loss carryforward of \$198,009,209 and a long-term capital loss carryforward of \$111,171,173 available to offset future net realized capital gains. These carryforwards do not expire.

As of March 31, 2023, the fund had no uncertain tax positions that would require financial statement recognition, derecognition or disclosure. The fund's federal tax returns are subject to examination by the Internal Revenue Service for a period of three years.

Distribution of income and gains. Distributions to shareholders from net investment income and net realized gains, if any, are recorded on the ex-date. The fund generally declares and pays dividends annually. Capital gain distributions, if any, are typically distributed annually.

The tax character of distributions for the years ended March 31, 2023 and 2022 was as follows:

	March 31, 2023	March 31, 2022
Ordinary income	—	\$263,596,968
Long-term capital gains	\$92,692,617	258,845,150
Total	\$92,692,617	\$522,442,118

Distributions paid by the fund with respect to each class of shares are calculated in the same manner, at the same time and in the same amount, except for the effect of class level expenses that may be applied differently to each class. As of March 31, 2023, there were no distributable earnings on a tax basis.

Such distributions and distributable earnings, on a tax basis, are determined in conformity with income tax regulations, which may differ from US GAAP. Distributions in excess of tax basis earnings and profits, if any, are reported in the fund's financial statements as a return of capital.

Capital accounts within the financial statements are adjusted for permanent book-tax differences. These adjustments have no impact on net assets or the results of operations. Temporary book-tax differences, if any, will reverse in a subsequent period. Book-tax differences are primarily attributable to net operating losses and wash sale loss deferrals.

Note 3 — Guarantees and indemnifications

Under the Trust's organizational documents, its Officers and Trustees are indemnified against certain liabilities arising out of the performance of their duties to the Trust, including the fund. Additionally, in the normal course of business, the fund enters into contracts with service providers that contain general indemnification clauses. The fund's maximum exposure under these arrangements is unknown, as this would involve future claims that may be made against the fund that have not yet occurred. The risk of material loss from such claims is considered remote.

Note 4 — Fees and transactions with affiliates

John Hancock Investment Management LLC (the Advisor) serves as investment advisor for the fund. John Hancock Investment Management Distributors LLC (the Distributor), an affiliate of the Advisor, serves as principal underwriter of the fund. The Advisor and the Distributor are indirect, principally owned subsidiaries of John Hancock Life Insurance Company (U.S.A.), which in turn is a subsidiary of Manulife Financial Corporation.

Management fee. The fund has an investment management agreement with the Advisor under which the fund pays a daily management fee to the Advisor equivalent on an annual basis to the sum of: (a) 0.875% of the first \$200 million of the fund's aggregate net assets; (b) 0.850% of the next \$300 million of the fund's aggregate net assets; (c) 0.825% of the next \$2.70 billion of the fund's aggregate net assets; (d) 0.800% of the next \$500 million of the fund's aggregate net assets; (e) 0.775% of the next \$500 million of the fund's aggregate net assets and (f) 0.755% of the fund's aggregate net assets in excess of \$4.20 billion. Aggregate net assets include net assets of the fund and Mid Cap Growth Trust, a series of John Hancock Variable Insurance Trust. The Advisor has a subadvisory agreement with Wellington Management Company, LLP. The fund is not responsible for payment of the subadvisory fees.

The Advisor has contractually agreed to reduce its management fee by an annual rate of 0.07% of the fund's average daily net assets. This agreement expires on July 31, 2023, unless renewed by mutual agreement of the

fund and the Advisor based upon a determination that this is appropriate under the circumstances at that time.

The Advisor has contractually agreed to waive a portion of its management fee and/or reimburse expenses for certain funds of the John Hancock group of funds complex, including the fund (the participating portfolios). This waiver is based upon aggregate net assets of all the participating portfolios. The amount of the reimbursement is calculated daily and allocated among all the participating portfolios in proportion to the daily net assets of each fund. During the year ended March 31, 2023, this waiver amounted to 0.01% of the fund's average daily net assets. This arrangement expires on July 31, 2024, unless renewed by mutual agreement of the fund and the Advisor based upon a determination that this is appropriate under the circumstances at that time.

For the year ended March 31, 2023, the expense reductions described above amounted to the following:

Class	Expense reduction	Class	Expense reduction
Class A	\$7,123	Class R6	\$234,704
Class C	65	Class NAV	826,419
Class I	2,762	Total	\$1,071,073

Expenses waived or reimbursed in the current fiscal period are not subject to recapture in future fiscal periods.

The investment management fees, including the impact of the waivers and reimbursements as described above, incurred for the year ended March 31, 2023, were equivalent to a net annual effective rate of 0.76% of the fund's average daily net assets.

Accounting and legal services. Pursuant to a service agreement, the fund reimburses the Advisor for all expenses associated with providing the administrative, financial, legal, compliance, accounting and recordkeeping services to the fund, including the preparation of all tax returns, periodic reports to shareholders and regulatory reports, among other services. These expenses are allocated to each share class based on its relative net assets at the time the expense was incurred. These accounting and legal services fees incurred, for the year ended March 31, 2023, amounted to an annual rate of 0.02% of the fund's average daily net assets.

Distribution and service plans. The fund has a distribution agreement with the Distributor. The fund has adopted distribution and service plans for certain classes as detailed below pursuant to Rule 12b-1 under the 1940 Act, to pay the Distributor for services provided as the distributor of shares of the fund. The fund may pay up to the following contractual rates of distribution and service fees under these arrangements, expressed as an annual percentage of average daily net assets for each class of the fund's shares:

Class	Rule 12b-1 Fee
Class A	0.25%
Class C	1.00%

Sales charges. Class A shares are assessed up-front sales charges, which resulted in payments to the Distributor amounting to \$506 for the year ended March 31, 2023. Of this amount, \$85 was retained and used for printing prospectuses, advertising, sales literature and other purposes and \$421 was paid as sales commissions to broker-dealers.

Class A and Class C shares may be subject to contingent deferred sales charges (CDSCs). Certain Class A shares purchased, including those that are acquired through purchases of \$1 million or more, and redeemed within one year of purchase are subject to a 1.00% sales charge. Class C shares that are redeemed within one year of purchase are subject to a 1.00% CDSC. CDSCs are applied to the lesser of the current market value at the time of redemption or the original purchase cost of the shares being redeemed. Proceeds from CDSCs are used to compensate the Distributor for providing distribution-related services in connection with the sale of these shares. During the year ended March 31, 2023, there were no CDSCs received by the Distributor for Class A or Class C shares.

Transfer agent fees. The John Hancock group of funds has a complex-wide transfer agent agreement with John Hancock Signature Services, Inc. (Signature Services), an affiliate of the Advisor. The transfer agent fees paid to Signature Services are determined based on the cost to Signature Services (Signature Services Cost) of providing recordkeeping services. It also includes out-of-pocket expenses, including payments made to third-parties for recordkeeping services provided to their clients who invest in one or more John Hancock funds. In addition, Signature Services Cost may be reduced by certain fees that Signature Services receives in connection with retirement and small accounts. Signature Services Cost is calculated monthly and allocated, as applicable, to five categories of share classes: Retail Share and Institutional Share Classes of Non-Municipal Bond Funds, Class R6 Shares, Retirement Share Classes and Municipal Bond Share Classes. Within each of these categories, the applicable costs are allocated to the affected John Hancock affiliated funds and/or classes, based on the relative average daily net assets.

Class level expenses. Class level expenses for the year ended March 31, 2023 were as follows:

Class	Distribution and service fees	Transfer agent fees
Class A	\$22,907	\$10,461
Class C	841	97
Class I	—	4,100
Class R6	—	28,797
Total	\$23,748	\$43,455

Trustee expenses. The fund compensates each Trustee who is not an employee of the Advisor or its affiliates. The costs of paying Trustee compensation and expenses are allocated to the fund based on its net assets relative to other funds within the John Hancock group of funds complex.

Note 5 — Fund share transactions

Transactions in fund shares for the year ended March 31, 2023, the period ended March 31, 2022 and the year ended August 31, 2021 were as follows:

	Year Ended 3-31-23		Period Ended 3-31-22 ¹		Year Ended 8-31-21	
	Shares	Amount	Shares	Amount	Shares	Amount
Class A shares²						
Sold	1,290,175	\$17,142,322	328,326	\$6,027,881	—	—
Distributions reinvested	68,019	838,676	—	—	—	—
Repurchased	(222,809)	(2,940,226)	(61,977)	(1,138,578)	—	—
Net increase	1,135,385	\$15,040,772	266,349	\$4,889,303	—	—
Class C shares²						
Sold	6,534	\$86,368	2,827	\$60,000	—	—
Distributions reinvested	466	5,695	—	—	—	—
Repurchased	(986)	(13,785)	—	—	—	—
Net increase	6,014	\$78,278	2,827	\$60,000	—	—
Class I shares²						
Sold	104,458	\$1,354,698	252,138	\$4,902,914	—	—
Distributions reinvested	19,443	240,504	—	—	—	—
Repurchased	(56,692)	(741,105)	(4,603)	(74,643)	—	—
Net increase	67,209	\$854,097	247,535	\$4,828,271	—	—

	Year Ended 3-31-23		Period Ended 3-31-22 ¹		Year Ended 8-31-21	
	Shares	Amount	Shares	Amount	Shares	Amount
Class R6 shares³						
Sold	1,089,384	\$14,697,891	162,552	\$3,079,089	—	—
Issued in reorganization	—	—	19,705,096	556,008,842	—	—
Distributions reinvested	1,617,670	20,042,927	6,370,816	141,941,775	—	—
Repurchased	(3,472,179)	(46,671,150)	(3,160,244)	(61,627,074)	—	—
Net increase (decrease)	(765,125)	\$(11,930,332)	23,078,220	\$639,402,632	—	—
Class 1 shares⁴						
Sold	—	—	34,008	\$964,219	1,286,989	\$36,936,063
Distributions reinvested	—	—	—	—	5,689,286	149,685,105
Repurchased	—	—	(763,258)	(21,273,235)	(4,822,216)	(132,632,186)
Redeemed in reorganization	—	—	(21,160,712)	(597,080,839)	—	—
Net increase (decrease)	—	—	(21,889,962)	\$(617,389,855)	2,154,059	\$53,988,982
Class NAV shares⁴						
Sold	9,998,344	\$133,937,239	6,777,824	\$126,581,857	9,615,843	\$265,194,414
Issued in reorganization	—	—	53,096,244	1,498,190,173	—	—
Distributions reinvested	5,775,847	71,562,747	17,078,112	380,500,343	11,457,715	307,295,923
Repurchased	(10,398,844)	(145,648,977)	(3,329,866)	(83,479,522)	(15,469,646)	(446,807,321)
Redeemed in reorganization	—	—	(50,645,278)	(1,457,118,176)	—	—
Net increase	5,375,347	\$59,851,009	22,977,036	\$464,674,675	5,603,912	\$125,683,016
Total net increase	5,818,830	\$63,893,824	24,682,005	\$496,465,026	7,757,971	\$179,671,998

1 For the seven-month period ended 3-31-22. John Hancock Funds II Mid Cap Stock Fund's (the "Accounting Survivor") fiscal year end was August 31 and the fund's fiscal year end is March 31.

2 The inception date for Class A, Class C and Class I shares is 11-5-21.

3 The inception date for Class R6 shares is 10-18-21.

4 Activity presented prior to close of business on October 15, 2021 represents the historical operating results of the Accounting Survivor. At the close of business on October 15, 2021, the Accounting Survivor was reorganized into the fund. Refer to Note 11 for further details.

Affiliates of the fund owned 25% and 100% of shares of Class C and Class NAV, respectively, on March 31, 2023. Such concentration of shareholders' capital could have a material effect on the fund if such shareholders redeem from the fund.

Note 6 — Purchase and sale of securities

Purchases and sales of securities, other than short-term investments, amounted to \$1,396,983,254 and \$1,411,596,576, respectively, for the year ended March 31, 2023.

Note 7 — Investment by affiliated funds

Certain investors in the fund are affiliated funds that are managed by the Advisor and its affiliates. The affiliated funds do not invest in the fund for the purpose of exercising management or control; however, this investment may represent a significant portion of the fund's net assets. At March 31, 2023, funds within the John Hancock group of funds complex held 74.8% of the fund's net assets. The following fund(s) had an affiliate ownership of 5% or more of the fund's net assets:

Portfolio	Affiliated Concentration
John Hancock Funds II Multimanager Lifestyle Growth Portfolio	26.2%
John Hancock Funds II Multimanager Lifestyle Balanced Portfolio	16.4%
John Hancock Funds II Multimanager Lifestyle Aggressive Portfolio	11.8%

Note 8 — Investment in affiliated underlying funds

The fund may invest in affiliated underlying funds that are managed by the Advisor and its affiliates. Information regarding the fund's fiscal year to date purchases and sales of the affiliated underlying funds as well as income and capital gains earned by the fund, if any, is as follows:

Affiliate	Ending share amount	Beginning value	Cost of purchases	Proceeds from shares sold	Realized gain (loss)	Change in unrealized appreciation (depreciation)	Dividends and distributions		Ending value
							Income distributions received	Capital gain distributions received	
John Hancock Collateral Trust*	4,469,708	\$15,826,228	\$400,675,204	\$(371,803,578)	\$(13,763)	\$(870)	\$142,886	—	\$44,683,221

* Refer to the Securities lending note within Note 2 for details regarding this investment.

Note 9 — Restricted securities

The fund may hold restricted securities which are restricted as to resale and the fund has limited rights to registration under the Securities Act of 1933. Disposal may involve time-consuming negotiations and expenses, and prompt sale at an acceptable price may be difficult to achieve. The following table summarizes the restricted securities held at March 31, 2023:

Issuer, Description	Original acquisition date	Acquisition cost	Beginning share amount	Shares purchased	Shares sold	Ending share amount	Value as a percentage of net assets	Ending value
Essence Group Holdings Corp.	5-1-14 ¹	\$5,083,384	2,958,957	—	—	2,958,957	0.3%	\$ 3,373,211
Lookout, Inc., Series F	7-31-14 ¹	4,276,874	392,767	—	—	392,767	0.2%	3,102,859
								\$6,476,070

¹ Reflects original acquisition date of security transferred in a merger with John Hancock Funds II Mid Cap Growth Fund which took place after market close on 10-15-21.

Note 10 — Reorganization

On October 6, 2021, the shareholders of John Hancock Funds II (JHF II) Mid Cap Stock Fund (the Accounting Survivor) voted to approve an Agreement and Plan of Reorganization (the Agreement) which provided for an exchange of shares of Mid Cap Growth Fund (the Acquiring Fund) with a value equal to the net assets transferred. The Agreement provided for (a) the acquisition of all the assets, subject to all of the liabilities, of the Accounting Survivor in exchange for shares of the Acquiring Fund with a value equal to the net assets transferred; (b) the liquidation of the Accounting Survivor; and (c) the distribution to the Accounting Survivor's shareholders of such Acquiring Fund's shares. The reorganization was intended to achieve potential economies of scale and allow shareholders of the Accounting Survivor to pursue an identical investment objective and have continuity of management. The Acquiring Fund adopted the performance and accounting history of the Accounting Survivor upon completion of the reorganization.

The reorganization qualified as a tax-free reorganization for federal income tax purposes with no gain or loss recognized by the Accounting Survivor or their shareholders. Thus, the investments were transferred to the Acquiring Fund at the Accounting Survivor’s identified cost. In addition, the Advisor bore the costs incurred in connection with the reorganization. The effective time of the reorganization occurred immediately after the close of regularly scheduled trading on the New York Stock Exchange (NYSE) on October 15, 2021. Prior to the reorganization, the fund had not yet commenced operations and had no assets or liabilities. The following outlines the reorganization:

Acquiring Portfolio	Acquired Portfolio	Net Asset Value of the Acquired Portfolio	Appreciation of the Acquired Portfolio's Investments	Shares Redeemed by the Acquired Portfolio	Shares Issued by the Acquiring Portfolio	Acquiring Portfolio Net Assets Prior to Combination	Acquiring Portfolio Total Net Assets After Combination
Mid Cap Growth Fund	Mid Cap Stock Fund	\$2,054,199,015	\$557,181,556	71,805,990	72,801,340	—	\$2,054,199,015

The Reorganization was accomplished by a tax-free exchange of shares of the fund at the following conversion ratios:

Accounting Survivor's Share Class	Conversion Ratio	Fund's Share Class
Class 1	1.00000	Class R6
Class 1	1.00000	Class NAV
Class NAV	0.98073	Class NAV

See Note 5 for capital shares issued in connection with the above referenced reorganization.

Report of Independent Registered Public Accounting Firm

To the Board of Trustees of John Hancock Investment Trust and Shareholders of John Hancock Mid Cap Growth Fund

Opinion on the Financial Statements

We have audited the accompanying statement of assets and liabilities, including the fund's investments, of John Hancock Mid Cap Growth Fund (one of the funds constituting John Hancock Investment Trust, referred to hereafter the "Fund") as of March 31, 2023, the related statement of operations for the year ended March 31, 2023, the statements of changes in net assets for the year ended March 31, 2023, for the period September 1, 2021 through March 31, 2022 and for the year ended August 31, 2021 including the related notes, and the financial highlights for each of the periods indicated therein (collectively referred to as the "financial statements"). In our opinion, the financial statements present fairly, in all material respects, the financial position of the Fund as of March 31, 2023, the results of its operations for the year then ended, the changes in its net assets for the year ended March 31, 2023, for the period September 1, 2021 through March 31, 2022 and for the year ended August 31, 2021 including the related notes, and the financial highlights for each of the periods indicated therein in conformity with accounting principles generally accepted in the United States of America.

Basis for Opinion

These financial statements are the responsibility of the Fund's management. Our responsibility is to express an opinion on the Fund's financial statements based on our audits. We are a public accounting firm registered with the Public Company Accounting Oversight Board (United States) (PCAOB) and are required to be independent with respect to the Fund in accordance with the U.S. federal securities laws and the applicable rules and regulations of the Securities and Exchange Commission and the PCAOB.

We conducted our audits of these financial statements in accordance with the standards of the PCAOB. Those standards require that we plan and perform the audit to obtain reasonable assurance about whether the financial statements are free of material misstatement, whether due to error or fraud.

Our audits included performing procedures to assess the risks of material misstatement of the financial statements, whether due to error or fraud, and performing procedures that respond to those risks. Such procedures included examining, on a test basis, evidence regarding the amounts and disclosures in the financial statements. Our audits also included evaluating the accounting principles used and significant estimates made by management, as well as evaluating the overall presentation of the financial statements. Our procedures included confirmation of securities owned as of March 31, 2023 by correspondence with the custodian, transfer agent and brokers; when replies were not received from brokers, we performed other auditing procedures. We believe that our audits provide a reasonable basis for our opinion.

/s/ PricewaterhouseCoopers LLP

Boston, Massachusetts

May 4, 2023

We have served as the auditor of one or more investment companies in the John Hancock group of funds since 1988.

Tax information

(Unaudited)

For federal income tax purposes, the following information is furnished with respect to the distributions of the fund, if any, paid during its taxable year ended March 31, 2023.

The fund reports the maximum amount allowable of its net taxable income as eligible for the corporate dividends-received deduction.

The fund reports the maximum amount allowable of its net taxable income as qualified dividend income as provided in the Jobs and Growth Tax Relief Reconciliation Act of 2003.

The fund reports the maximum amount allowable as Section 163(j) Interest Dividends.

The fund paid \$92,692,617 in long term capital gain dividends.

The fund reports the maximum amount allowable of its Section 199A dividends as defined in Proposed Treasury Regulation §1.199A-3(d).

Eligible shareholders will be mailed a 2023 Form 1099-DIV in early 2024. This will reflect the tax character of all distributions paid in calendar year 2023.

Please consult a tax advisor regarding the tax consequences of your investment in the fund.

STATEMENT REGARDING LIQUIDITY RISK MANAGEMENT

Operation of the Liquidity Risk Management Program

This section describes the operation and effectiveness of the Liquidity Risk Management Program (LRMP) established in accordance with Rule 22e-4 under the Investment Company Act of 1940, as amended (the Liquidity Rule). The Board of Trustees (the Board) of each Fund in the John Hancock Group of Funds (each a Fund and collectively, the Funds) that is subject to the requirements of the Liquidity Rule has appointed John Hancock Investment Management LLC and John Hancock Variable Trust Advisers LLC (together, the Advisor) to serve as Administrator of the LRMP with respect to each of the Funds, including John Hancock Mid Cap Growth Fund, subject to the oversight of the Board. In order to provide a mechanism and process to perform the functions necessary to administer the LRMP, the Advisor established the Liquidity Risk Management Committee (the Committee). The Fund's subadvisor, Wellington Management Company LLP (the Subadvisor) executes the day-to-day investment management and security-level activities of the Fund in accordance with the requirements of the LRMP, subject to the supervision of the Advisor and the Board.

The Committee receives monthly reports and holds quarterly in person meetings to: (1) review the day-to-day operations of the LRMP; (2) monitor current market and liquidity conditions and assess liquidity risks; (3) review and approve month-end liquidity classifications; (4) monitor illiquid investment levels against the 15% limit on illiquid investments and established Highly Liquid Investment Minimums (HLIMs), if any; (5) review quarterly testing and determinations, as applicable; (6) review redemption-in-kind activities; and (7) review other LRMP related material. The Advisor also conducts daily, monthly, quarterly, and annual quantitative and qualitative assessments of each subadvisor to a Fund that is subject to the requirements of the Liquidity Rule and is a part of the LRMP to monitor investment performance issues, risks and trends. In addition, the Advisor may conduct ad-hoc reviews and meetings with subadvisors as issues and trends are identified, including potential liquidity issues. The Committee also monitors global events, such as the ongoing Russian invasion of Ukraine and related U.S. imposed sanctions on the Russian government, companies and oligarchs, and other amendments to the Office of Foreign Assets Control sanctioned company lists, that could impact the markets and liquidity of portfolio investments and their classifications. In addition, the Committee monitors macro events and assesses their potential impact on liquidity brought on by fear of contagion (e.g. regional banking crisis).

The Committee provided the Board at a meeting held on March 28-30, 2023 with a written report which addressed the Committee's assessment of the adequacy and effectiveness of the implementation and operation of the LRMP and any material changes to the LRMP. The report, which covered the period January 1, 2022 through December 31, 2022, included an assessment of important aspects of the LRMP including, but not limited to: (1) Security-level liquidity classifications; (2) Fund-level liquidity risk assessment; (3) Reasonably Anticipated Trade Size (RATS) determination; (4) HLIM determination and daily monitoring; (5) Daily compliance with the 15% limit on illiquid investments; (6) Operation of the Fund's Redemption-In-Kind Procedures; and (7) Review of liquidity management facilities.

The report provided an update on Committee activities over the previous year. Additionally, the report included a discussion of notable changes and enhancements to the LRMP implemented during 2022 and key initiatives for 2023.

The report also covered material liquidity matters which occurred or were reported during this period applicable to the Fund, if any, and the Committee's actions to address such matters.

The report stated, in relevant part, that during the period covered by the report:

- The Fund's investment strategy remained appropriate for an open-end fund structure;
- The Fund was able to meet requests for redemption without significant dilution of remaining shareholders' interests in the Fund;

- The Fund did not experience any breaches of the 15% limit on illiquid investments, or any applicable HLIM, that would require reporting to the Securities and Exchange Commission;
- The Fund continued to qualify as a Primarily Highly Liquid Fund under the Liquidity Rule and therefore is not required to establish a HLIM; and
- The Chief Compliance Officer's office, as a part of their annual Rule 38a-1 assessment of the Fund's policies and procedures, reviewed the LRMP's control environment and deemed it to be operating effectively and in compliance with the Board approved procedures.

Adequacy and Effectiveness

Based on the annual review and assessment conducted by the Committee, the Committee has determined that the LRMP and its controls have been implemented and are operating in a manner that is adequately and effectively managing the liquidity risk of the Fund.

Trustees and Officers

This chart provides information about the Trustees and Officers who oversee your John Hancock fund. Officers elected by the Trustees manage the day-to-day operations of the fund and execute policies formulated by the Trustees.

Independent Trustees

Name, year of birth Position(s) held with Trust Principal occupation(s) and other directorships during past 5 years	Trustee of the Trust since ¹	Number of John Hancock funds overseen by Trustee
--	--	---

Hassell H. McClellan, Born: 1945	2012	186
---	-------------	------------

Trustee and Chairperson of the Board

Director/Trustee, Virtus Funds (2008-2020); Director, The Barnes Group (2010-2021); Associate Professor, The Wallace E. Carroll School of Management, Boston College (retired 2013). Trustee (since 2005) and Chairperson of the Board (since 2017) of various trusts within the John Hancock Fund Complex.

James R. Boyle, Born: 1959	2015	183
-----------------------------------	-------------	------------

Trustee

Board Member, United of Omaha Life Insurance Company (since 2022). Board Member, Mutual of Omaha Investor Services, Inc. (since 2022). Foresters Financial, Chief Executive Officer (2018–2022) and board member (2017–2022). Manulife Financial and John Hancock, more than 20 years, retiring in 2012 as Chief Executive Officer, John Hancock and Senior Executive Vice President, Manulife Financial. Trustee of various trusts within the John Hancock Fund Complex (2005–2014 and since 2015).

William H. Cunningham,² Born: 1944	1986	184
--	-------------	------------

Trustee

Professor, University of Texas, Austin, Texas (since 1971); former Chancellor, University of Texas System and former President of the University of Texas, Austin, Texas; Director (since 2006), Lincoln National Corporation (insurance); Director, Southwest Airlines (since 2000). Trustee of various trusts within the John Hancock Fund Complex (since 1986).

Noni L. Ellison,* Born: 1971	2022	183
-------------------------------------	-------------	------------

Trustee

Senior Vice President, General Counsel & Corporate Secretary, Tractor Supply Company (rural lifestyle retailer) (since 2021); General Counsel, Chief Compliance Officer & Corporate Secretary, Carestream Dental, L.L.C. (2017–2021); Associate General Counsel & Assistant Corporate Secretary, W.W. Grainger, Inc. (global industrial supplier) (2015–2017); Board Member, Goodwill of North Georgia, 2018 (FY2019)–2020 (FY2021); Board Member, Howard University School of Law Board of Visitors (since 2021); Board Member, University of Chicago Law School Board of Visitors (since 2016); Board member, Children's Healthcare of Atlanta Foundation Board (2021–present). Trustee of various trusts within the John Hancock Fund Complex (since 2022).

Grace K. Fey, Born: 1946	2012	186
---------------------------------	-------------	------------

Trustee

Chief Executive Officer, Grace Fey Advisors (since 2007); Director and Executive Vice President, Frontier Capital Management Company (1988–2007); Director, Fiduciary Trust (since 2009). Trustee of various trusts within the John Hancock Fund Complex (since 2008).

Dean C. Garfield,* Born: 1968	2022	183
--------------------------------------	-------------	------------

Trustee

Vice President, Netflix, Inc. (since 2019); President & Chief Executive Officer, Information Technology Industry Council (2009–2019); NYU School of Law Board of Trustees (since 2021); Member, U.S. Department of Transportation, Advisory Committee on Automation (since 2021); President of the United States Trade Advisory Council (2010–2018); Board Member, College for Every Student (2017–2021); Board Member, The Seed School of Washington, D.C. (2012–2017). Trustee of various trusts within the John Hancock Fund Complex (since 2022).

Independent Trustees (continued)

Name, year of birth Position(s) held with Trust Principal occupation(s) and other directorships during past 5 years	Trustee of the Trust since ¹	Number of John Hancock funds overseen by Trustee
Deborah C. Jackson, Born: 1952	2008	185
<i>Trustee</i> President, Cambridge College, Cambridge, Massachusetts (since 2011); Board of Directors, Amwell Corporation (since 2020); Board of Directors, Massachusetts Women's Forum (2018-2020); Board of Directors, National Association of Corporate Directors/New England (2015-2020); Chief Executive Officer, American Red Cross of Massachusetts Bay (2002–2011); Board of Directors of Eastern Bank Corporation (since 2001); Board of Directors of Eastern Bank Charitable Foundation (since 2001); Board of Directors of Boston Stock Exchange (2002–2008); Board of Directors of Harvard Pilgrim Healthcare (health benefits company) (2007–2011). Trustee of various trusts within the John Hancock Fund Complex (since 2008).		
Patricia Lizarraga,^{2,*} Born: 1966	2022	183
<i>Trustee</i> Founder, Chief Executive Officer, Hypatia Capital Group (advisory and asset management company) (since 2007); Independent Director, Audit Committee Chair, and Risk Committee Member, Credicorp, Ltd. (since 2017); Independent Director, Audit Committee Chair, Banco De Credito Del Peru (since 2017); Trustee, Museum of Art of Lima (since 2009). Trustee of various trusts within the John Hancock Fund Complex (since 2022).		
Steven R. Pruchansky, Born: 1944	1994	183
<i>Trustee and Vice Chairperson of the Board</i> Managing Director, Pru Realty (since 2017); Chairman and Chief Executive Officer, Greenscapes of Southwest Florida, Inc. (2014-2020); Director and President, Greenscapes of Southwest Florida, Inc. (until 2000); Member, Board of Advisors, First American Bank (until 2010); Managing Director, Jon James, LLC (real estate) (since 2000); Partner, Right Funding, LLC (2014-2017); Director, First Signature Bank & Trust Company (until 1991); Director, Mast Realty Trust (until 1994); President, Maxwell Building Corp. (until 1991). Trustee (since 1992), Chairperson of the Board (2011–2012), and Vice Chairperson of the Board (since 2012) of various trusts within the John Hancock Fund Complex.		
Frances G. Rathke,² Born: 1960	2020	183
<i>Trustee</i> Director, Audit Committee Chair, Oatly Group AB (plant-based drink company) (since 2021); Director, Audit Committee Chair and Compensation Committee Member, Green Mountain Power Corporation (since 2016); Director, Treasurer and Finance & Audit Committee Chair, Flynn Center for Performing Arts (since 2016); Director and Audit Committee Chair, Planet Fitness (since 2016); Chief Financial Officer and Treasurer, Keurig Green Mountain, Inc. (2003-retired 2015). Trustee of various trusts within the John Hancock Fund Complex (since 2020).		
Gregory A. Russo, Born: 1949	2009	183
<i>Trustee</i> Director and Audit Committee Chairman (2012-2020), and Member, Audit Committee and Finance Committee (2011-2020), NCH Healthcare System, Inc. (holding company for multi-entity healthcare system); Director and Member (2012-2018), and Finance Committee Chairman (2014-2018), The Moorings, Inc. (nonprofit continuing care community); Global Vice Chairman, Risk & Regulatory Matters, KPMG LLP (KPMG) (2002–2006); Vice Chairman, Industrial Markets, KPMG (1998–2002). Trustee of various trusts within the John Hancock Fund Complex (since 2008).		

Non-Independent Trustees³

Name, year of birth Position(s) held with Trust Principal occupation(s) and other directorships during past 5 years	Trustee of the Trust since ¹	Number of John Hancock funds overseen by Trustee
Andrew G. Arnott, Born: 1971	2017	184

President and Non-Independent Trustee

Global Head of Retail for Manulife (since 2022); Head of Wealth and Asset Management, United States and Europe, for John Hancock and Manulife (since 2018); Director and Executive Vice President, John Hancock Investment Management LLC (since 2005, including prior positions); Director and Executive Vice President, John Hancock Variable Trust Advisers LLC (since 2006, including prior positions); President, John Hancock Investment Management Distributors LLC (since 2004, including prior positions); President of various trusts within the John Hancock Fund Complex (since 2007, including prior positions). Trustee of various trusts within the John Hancock Fund Complex (since 2017).

Marianne Harrison, ^ Born: 1963	2018	183
--	-------------	------------

Non-Independent Trustee

President and CEO, John Hancock (since 2017); President and CEO, Manulife Canadian Division (2013–2017); Member, Board of Directors, Boston Medical Center (since 2021); Member, Board of Directors, CAE Inc. (since 2019); Member, Board of Directors, MA Competitive Partnership Board (since 2018); Member, Board of Directors, American Council of Life Insurers (ACLI) (since 2018); Member, Board of Directors, Communitel, an industry-led innovation center that fosters technology companies in Canada (2017–2019); Member, Board of Directors, Manulife Assurance Canada (2015–2017); Board Member, St. Mary's General Hospital Foundation (2014–2017); Member, Board of Directors, Manulife Bank of Canada (2013–2017); Member, Standing Committee of the Canadian Life & Health Assurance Association (2013–2017); Member, Board of Directors, John Hancock USA, John Hancock Life & Health, John Hancock New York (2012–2013 and since 2017). Trustee of various trusts within the John Hancock Fund Complex (since 2018).

Paul Lorentz, † Born: 1968	2022	183
-----------------------------------	-------------	------------

Non-Independent Trustee

Global Head, Manulife Wealth and Asset Management (since 2017); General Manager, Manulife, Individual Wealth Management and Insurance (2013–2017); President, Manulife Investments (2010–2016). Trustee of various trusts within the John Hancock Fund Complex (since 2022).

Principal officers who are not Trustees

Name, year of birth Position(s) held with Trust Principal occupation(s) during past 5 years	Current Position(s) with the Trust since
Charles A. Rizzo, Born: 1957	2007

Chief Financial Officer

Vice President, John Hancock Financial Services (since 2008); Senior Vice President, John Hancock Investment Management LLC and John Hancock Variable Trust Advisers LLC (since 2008); Chief Financial Officer of various trusts within the John Hancock Fund Complex (since 2007).

Salvatore Schiavone, Born: 1965	2010
--	-------------

Treasurer

Assistant Vice President, John Hancock Financial Services (since 2007); Vice President, John Hancock Investment Management LLC and John Hancock Variable Trust Advisers LLC (since 2007); Treasurer of various trusts within the John Hancock Fund Complex (since 2007, including prior positions).

Principal officers who are not Trustees (continued)

Name, year of birth Position(s) held with Trust Principal occupation(s) during past 5 years	Current Position(s) with the Trust since
Christopher (Kit) Sechler, Born: 1973 <i>Secretary and Chief Legal Officer</i> Vice President and Deputy Chief Counsel, John Hancock Investment Management (since 2015); Assistant Vice President and Senior Counsel (2009–2015), John Hancock Investment Management; Assistant Secretary of John Hancock Investment Management LLC and John Hancock Variable Trust Advisers LLC (since 2009); Chief Legal Officer and Secretary of various trusts within the John Hancock Fund Complex (since 2009, including prior positions).	2018
Trevor Swanberg, Born: 1979 <i>Chief Compliance Officer</i> Chief Compliance Officer, John Hancock Investment Management LLC and John Hancock Variable Trust Advisers LLC (since 2020); Deputy Chief Compliance Officer, John Hancock Investment Management LLC and John Hancock Variable Trust Advisers LLC (2019–2020); Assistant Chief Compliance Officer, John Hancock Investment Management LLC and John Hancock Variable Trust Advisers LLC (2016–2019); Vice President, State Street Global Advisors (2015–2016); Chief Compliance Officer of various trusts within the John Hancock Fund Complex (since 2016, including prior positions). The business address for all Trustees and Officers is 200 Berkeley Street, Boston, Massachusetts 02116-5023. The Statement of Additional Information of the fund includes additional information about members of the Board of Trustees of the Trust and is available without charge, upon request, by calling 800-225-5291.	2020

¹ Each Trustee holds office until his or her successor is duly elected and qualified, or until the Trustee's death, retirement, resignation, or removal. Mr. Boyle has served as Trustee at various times prior to the date listed in the table.

² Member of the Audit Committee.

³ The Trustee is a Non-Independent Trustee due to current or former positions with the Advisor and certain affiliates.

^{*} Elected to serve as Independent Trustee effective as of September 9, 2022.

[^] Ms. Harrison is retiring effective May 1, 2023.

[†] Elected to serve as Non-Independent Trustee effective as of September 9, 2022.

More information

Trustees

Hassell H. McClellan, *Chairperson*
Steven R. Pruchansky, *Vice Chairperson*
Andrew G. Arnott[†]
James R. Boyle
William H. Cunningham*
Grace K. Fey
Noni L. Ellison[^]
Dean C. Garfield[^]
Marianne Harrison^{†, #}
Deborah C. Jackson
Patricia Lizarraga^{*, ^}
Paul Lorentz[†]
Frances G. Rathke*
Gregory A. Russo

Officers

Andrew G. Arnott
President
Charles A. Rizzo
Chief Financial Officer
Salvatore Schiavone
Treasurer
Christopher (Kit) Sechler
Secretary and Chief Legal Officer
Trevor Swanberg
Chief Compliance Officer

[†] Non-Independent Trustee

^{*} Member of the Audit Committee

[^] Elected to serve as Independent Trustee effective as of September 9, 2022.

[#] Ms. Harrison is retiring effective May 1, 2023.

[†] Elected to serve as Non-Independent Trustee effective as of September 9, 2022.

The fund's proxy voting policies and procedures, as well as the fund proxy voting record for the most recent twelve-month period ended June 30, are available free of charge on the Securities and Exchange Commission (SEC) website at [sec.gov](https://www.sec.gov) or on our website.

All of the fund's holdings as of the end of the third month of every fiscal quarter are filed with the SEC on Form N-PORT within 60 days of the end of the fiscal quarter. The fund's Form N-PORT filings are available on our website and the SEC's website, [sec.gov](https://www.sec.gov).

We make this information on your fund, as well as **monthly portfolio holdings**, and other fund details available on our website at jhinvestments.com or by calling 800-225-5291.

Investment advisor

John Hancock Investment Management LLC

Subadvisor

Wellington Management Company LLP

Portfolio Managers

Mario E. Abularach, CFA, CMT
Stephen Mortimer

Principal distributor

John Hancock Investment Management
Distributors LLC

Custodian

State Street Bank and Trust Company

Transfer agent

John Hancock Signature Services, Inc.

Legal counsel

K&L Gates LLP

Independent registered public accounting firm

PricewaterhouseCoopers LLP

You can also contact us:

800-225-5291

jhinvestments.com

Regular mail:

John Hancock Signature Services, Inc.
P.O. Box 219909
Kansas City, MO 64121-9909

Express mail:

John Hancock Signature Services, Inc.
430 W 7th Street
Suite 219909
Kansas City, MO 64105-1407

Protect yourself by using eDelivery

Signing up for the electronic delivery of your statements and other financial publications is a great way to help protect your privacy. eDelivery provides you with secure, instant access to all of your statements in one convenient location.

BENEFITS OF EDELIVERY

- **Added security:** Password protection helps you safely retrieve documents online
- **Save time:** Receive instant email notification once statements are available
- **Reduce clutter:** View documents online to reduce the amount of paper for filing, shredding, or recycling

Sign up for **eDelivery**.
Fast. Simple. Secure.
jhinvestments.com/login

SIGN UP FOR EDELIVERY TODAY!

Direct shareholders

If you receive statements directly through John Hancock Investment Management and would like to participate in eDelivery, go to **jhinvestments.com/login**. To log in to your account, click on the "Log in" button on the page's top right corner. In the "Access your investments account" area, go to the "Individual retirement or mutual fund account" section and select the option that applies to you. Please be aware that you may be required to provide your account number and certain personal account information.

You may revoke your consent at any time by simply visiting jhinvestments.com/login and following the instructions above. You may also revoke consent by calling 800-225-5291 or by writing to us at the following address: John Hancock Signature Services, Inc., P.O. Box 219909, Kansas City, MO 64121-9909. We reserve the right to deliver documents to you on paper at any time should the need arise.

Brokerage account shareholders

If you receive statements directly from your bank or broker and would like to participate in eDelivery, go to **icsdelivery/live** or contact your financial representative.

Get your questions answered by using our shareholder resources

ONLINE

- Visit **jhinvestments.com** to access a range of resources for individual investors, from account details and fund information to forms and our latest insight on the markets and economy.
- Use our **Fund Compare** tool to compare thousands of funds and ETFs across dozens of risk and performance metrics—all powered by Morningstar.
- Visit our online **Tax Center**, where you'll find helpful taxpayer resources all year long, including tax forms, planning guides, and other fund-specific information.
- Follow us on **Facebook, Twitter, and LinkedIn** to get the latest updates on the markets and what's trending now.

BY PHONE

Call our customer service representatives at 800-225-5291, Monday to Thursday, 8:00 A.M. to 7:00 P.M., and Friday, 8:00 A.M. to 6:00 P.M., Eastern time. We're here to help!

John Hancock family of funds

U.S. EQUITY FUNDS

Blue Chip Growth
Classic Value
Disciplined Value
Disciplined Value Mid Cap
Equity Income
Financial Industries
Fundamental All Cap Core
Fundamental Large Cap Core
Mid Cap Growth
New Opportunities
Regional Bank
Small Cap Core
Small Cap Growth
Small Cap Value
U.S. Global Leaders Growth
U.S. Growth

INTERNATIONAL EQUITY FUNDS

Disciplined Value International
Emerging Markets
Emerging Markets Equity
Fundamental Global Franchise
Global Environmental Opportunities
Global Equity
Global Shareholder Yield
Global Thematic Opportunities
International Dynamic Growth
International Growth
International Small Company

FIXED-INCOME FUNDS

Bond
California Municipal Bond
Emerging Markets Debt
Floating Rate Income
Government Income
High Yield
High Yield Municipal Bond
Income
Investment Grade Bond
Money Market
Municipal Opportunities
Opportunistic Fixed Income
Short Duration Bond
Short Duration Municipal Opportunities
Strategic Income Opportunities

ALTERNATIVE FUNDS

Alternative Asset Allocation
Diversified Macro
Infrastructure
Multi-Asset Absolute Return
Real Estate Securities
Seaport Long/Short

A fund's investment objectives, risks, charges, and expenses should be considered carefully before investing. The prospectus contains this and other important information about the fund. To obtain a prospectus, contact your financial professional, call John Hancock Investment Management at 800-225-5291, or visit our website at jhinvestments.com. Please read the prospectus carefully before investing or sending money.

EXCHANGE-TRADED FUNDS

John Hancock Corporate Bond ETF
John Hancock International High Dividend ETF
John Hancock Mortgage-Backed Securities ETF
John Hancock Multifactor Developed International ETF
John Hancock Multifactor Emerging Markets ETF
John Hancock Multifactor Large Cap ETF
John Hancock Multifactor Mid Cap ETF
John Hancock Multifactor Small Cap ETF
John Hancock Preferred Income ETF
John Hancock U.S. High Dividend ETF

ASSET ALLOCATION/TARGET DATE FUNDS

Balanced
Multi-Asset High Income
Lifestyle Blend Portfolios
Lifetime Blend Portfolios
Multimanager Lifestyle Portfolios
Multimanager Lifetime Portfolios
Preservation Blend Portfolios

ENVIRONMENTAL, SOCIAL, AND GOVERNANCE FUNDS

ESG Core Bond
ESG International Equity
ESG Large Cap Core

CLOSED-END FUNDS

Asset-Based Lending
Financial Opportunities
Hedged Equity & Income
Income Securities Trust
Investors Trust
Preferred Income
Preferred Income II
Preferred Income III
Premium Dividend
Tax-Advantaged Dividend Income
Tax-Advantaged Global Shareholder Yield

John Hancock ETF shares are bought and sold at market price (not NAV), and are not individually redeemed from the fund. Brokerage commissions will reduce returns.

John Hancock ETFs are distributed by Foreside Fund Services, LLC, and are subadvised by Manulife Investment Management (US) LLC or Dimensional Fund Advisors LP. Foreside is not affiliated with John Hancock Investment Management Distributors LLC, Manulife Investment Management (US) LLC or Dimensional Fund Advisors LP.

Dimensional Fund Advisors LP receives compensation from John Hancock in connection with licensing rights to the John Hancock Dimensional indexes. Dimensional Fund Advisors LP does not sponsor, endorse, or sell, and makes no representation as to the advisability of investing in, John Hancock Multifactor ETFs.

A trusted brand

John Hancock Investment Management is a premier asset manager with a heritage of financial stewardship dating back to 1862. Helping our shareholders pursue their financial goals is at the core of everything we do. It's why we support the role of professional financial advice and operate with the highest standards of conduct and integrity.

A better way to invest

We serve investors globally through a unique multimanager approach: We search the world to find proven portfolio teams with specialized expertise for every strategy we offer, then we apply robust investment oversight to ensure they continue to meet our uncompromising standards and serve the best interests of our shareholders.

Results for investors

Our unique approach to asset management enables us to provide a diverse set of investments backed by some of the world's best managers, along with strong risk-adjusted returns across asset classes.

"A trusted brand" is based on a survey of 6,651 respondents conducted by Medallia between 3/18/20 and 5/13/20.



John Hancock Investment Management Distributors LLC, Member FINRA, SIPC
200 Berkeley Street, Boston, MA 02116-5010, 800-225-5291,
jhinvestments.com

Manulife Investment Management, the Stylized M Design, and Manulife Investment Management & Stylized M Design are trademarks of The Manufacturers Life Insurance Company and are used by its affiliates under license.

NOT FDIC INSURED. MAY LOSE VALUE. NO BANK GUARANTEE. NOT INSURED BY ANY GOVERNMENT AGENCY.

This report is for the information of the shareholders of John Hancock Mid Cap Growth Fund. It is not authorized for distribution to prospective investors unless preceded or accompanied by a prospectus.

A company of  **Manulife** Investment Management

MF2833373

481A 3/23
5/2023